

PRODUCT OF THE MONTH

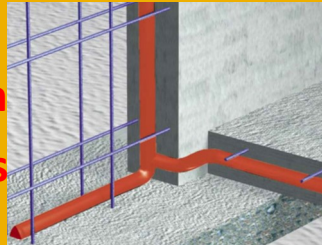
SikaSwell[®] S-2



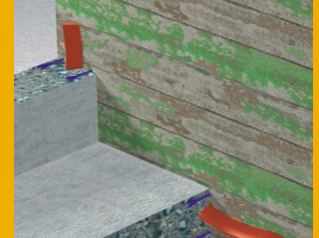
Size—600 ml

One component polyurethane, extrudable swelling waterstop.

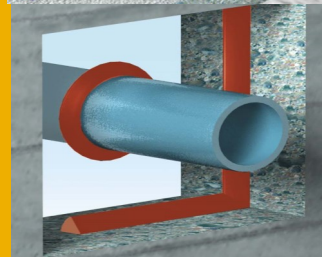
Construction
Joints



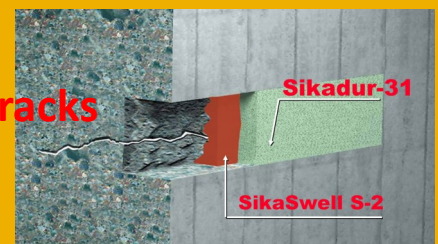
Sealing new to
existing works



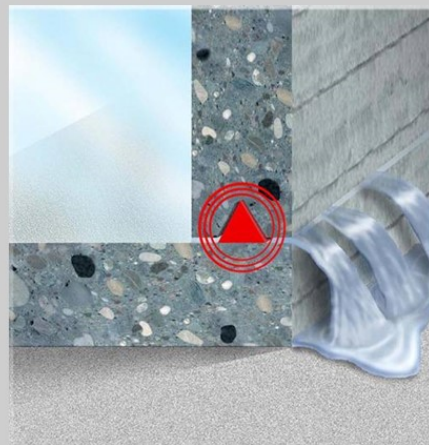
Penetrations



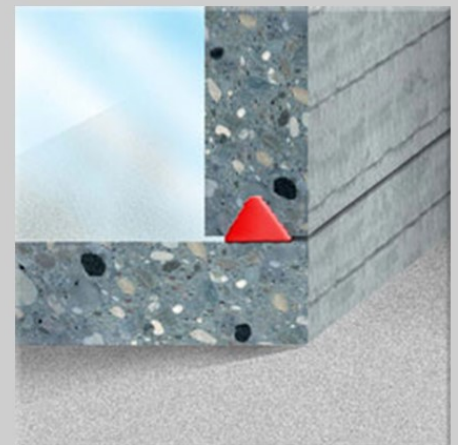
Sealing Cracks



No profile
Water flows
through the
construction joint



With SikaSwell S-2
water can pass at
the beginning but in
a very limited
quantity



SikaSwell S-2
After expansion
the pressure
generated by
SikaSwell S-2
assures a perfectly
watertight joint

aus.sika.com

BUILDING TRUST



**CONCRETE PROTECTION
PTY LTD**

155 Barkly Avenue, Burnley, Victoria. 3121

Tel: 03 9429 3377 Fax: 03 9427 0745

Email: info@conpro.com.au

Web: www.conpro.com.au