

# POLY GLOSS

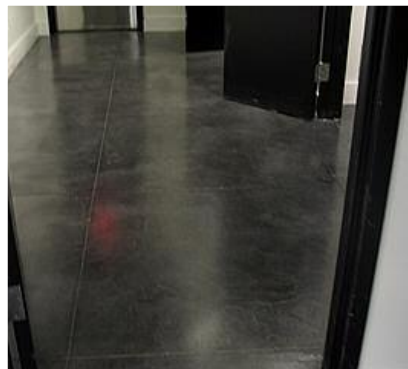
**multi-  
purpose,  
super  
tough  
interior  
high gloss  
coating**

Easy to use, long wearing, single pack polyurethane interior coating for concrete, masonry and timber surfaces. Applied as a hard wearing high gloss finishing coat

The product is clear, drying to a honey finish.

#### **TYPICAL APPLICATIONS:**

- concrete floors
- natural timber – furniture, flooring.
- Surface treatment over stone, masonry and walls etc.
- As a final coating over coloured surfaces- floors etc.



technical information available on web page  
Meeting Australian Standards

# POLY GLOSS

## TECHNICAL DATA

### PREPARATION

All surfaces must be clean, dry and free from dirt, dust, grease and loose or flakey paint. Fill holes and cracks with suitable filler and sand lightly. Undercoat and sealers should be used where required prior to application of finishing coats. A grey undercoat may be required prior to top coating with paint tinted from an accent or deep base. Two finishing coats are recommended for durability and decorating excellence.

### APPLICATION

POLYGLOSS may be applied using spray, brush or roller. Ideally, 2 or more coats should be applied at intervals of not less than 8 hours. Do not apply when rain is imminent or when the air or surface temperature is below 12° C or above 32° C. First coat may be diluted with no more than 10% mineral turpentine.

### COVERAGE

Over previously coated surfaces 1 litre covers approx 15 square metres. New or porous surfaces 1 litre covers approx 7.5 square metres.

### CURING

Touch dry 8 hours, recoat 16 hours.

### CLEAN UP

Wash tools and equipment with mineral turpentine.

### PRECAUTIONS

- Not for external applications.
- Always test Polygloss to previously coated surfaces to confirm compatibility, prior to job application.

### PACKAGING

Available in 1, 2, 4 and 10 litre containers

