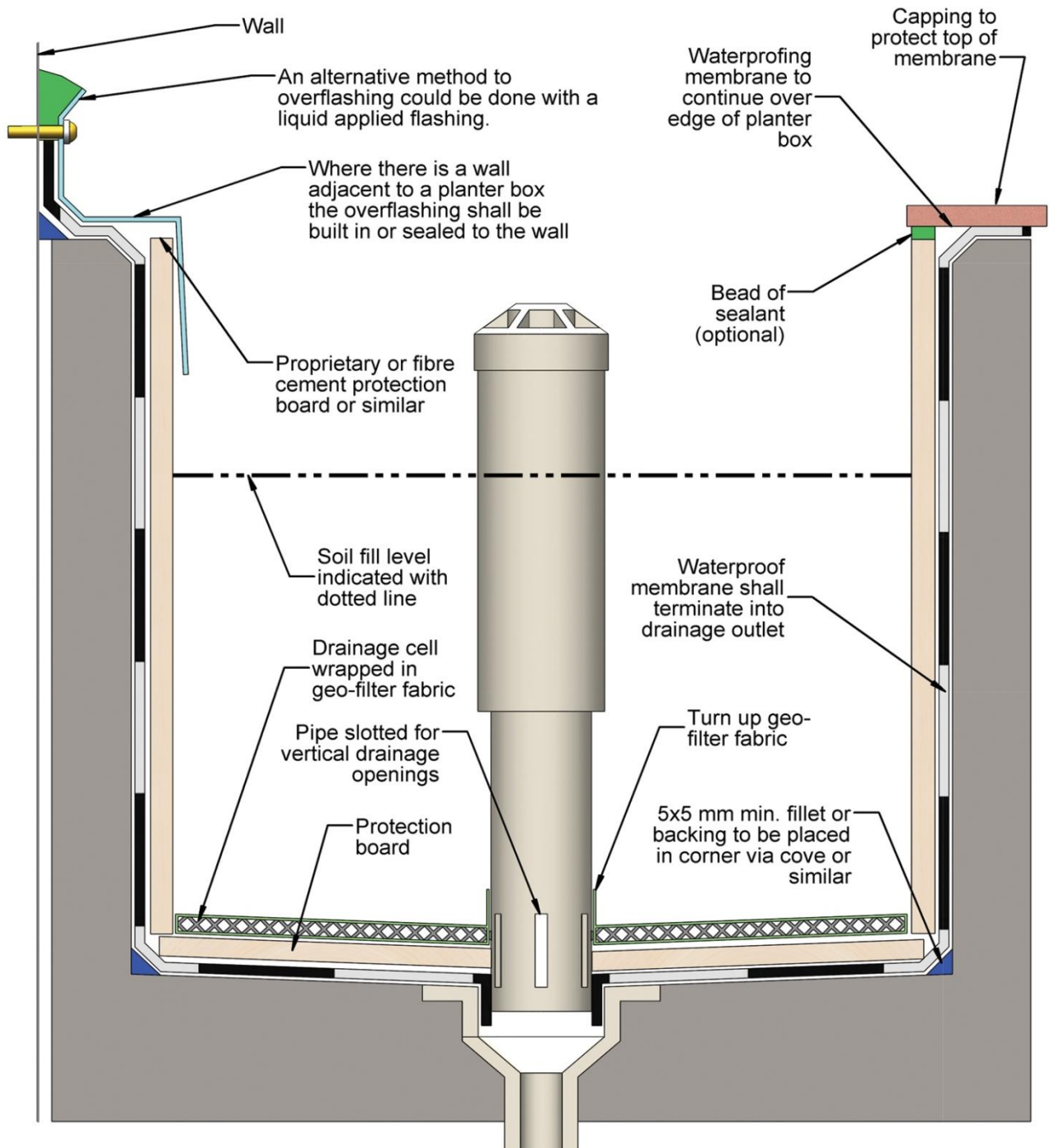


TECHNICAL TIPS – Planter Boxes

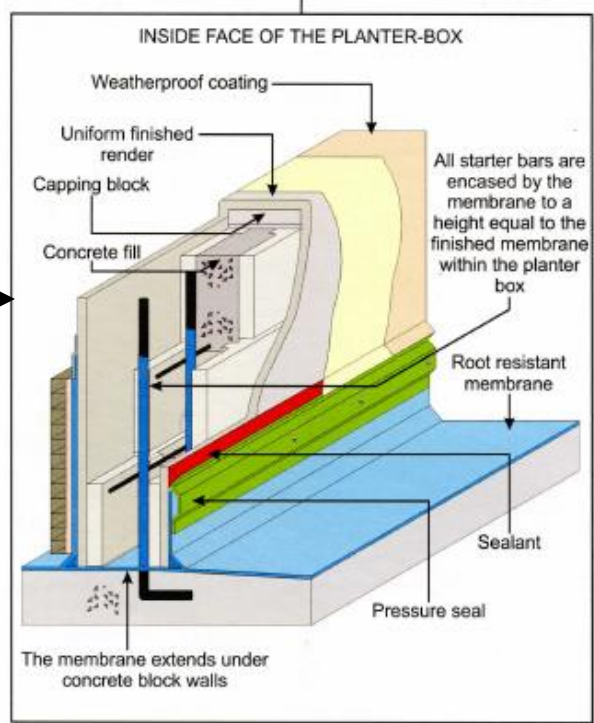
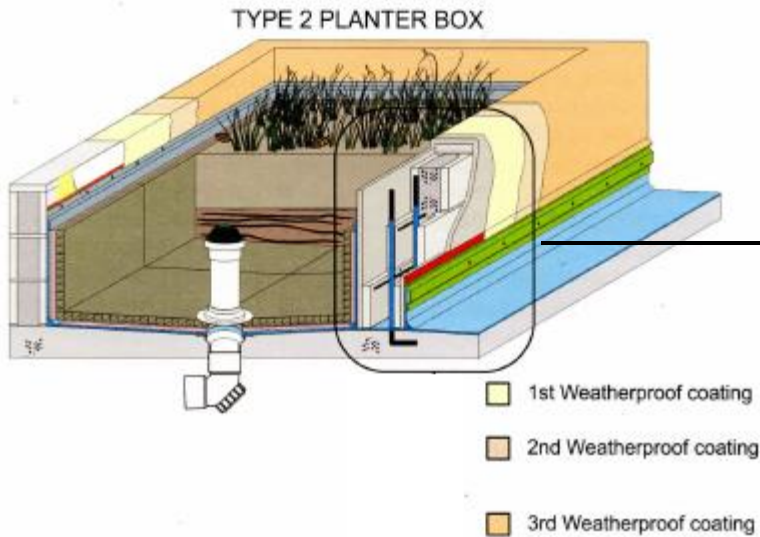
AS 4654.2; 2.13 Planter Boxes

* provision for overflow * choice of plants for potential root damage to membrane for consideration of protection board * soil fill level should consider mulch * external exposed walls of planter box to be waterproofed to prevent failure of the internal membrane



TECHNICAL TIPS – Planter Boxes

Concrete block with internal membrane system



Brick face with internal membrane system

