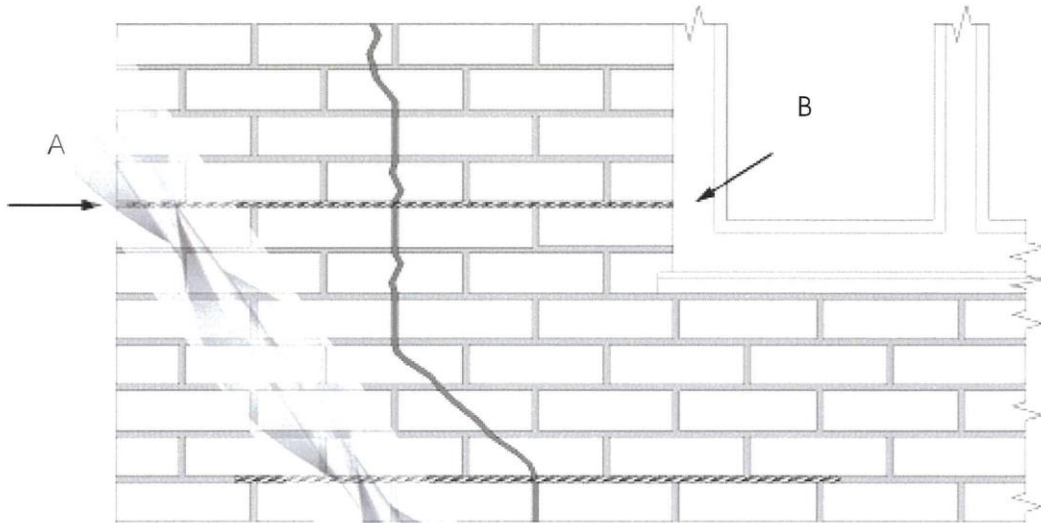


Crack Stitching – General Application



STANDARD METHOD STATEMENT

- 1 Rake out or cut slots into horizontal mortar joint to specified depth and at required vertical spacing.
- 2 Vacuum out the slots and thoroughly flush with water.
- 3 Using the grout gun insert a bead of HeliGrout into the back of the slot.
- 4 Push the HeliTie Bar into the HeliGrout to obtain good coverage.
- 5 Insert a bead of HeliGrout over the exposed rod and iron into the slot using the finger trowel.
- 6 Point up or fill the joint and leave ready for any decoration.

Guidelines - Unless specified otherwise the following criteria are to be used:

- a) Depth of slot to be 25mm - 35mm.
- b) HeliTie Bars to extend a minimum of 500mm each side of the crack.
- c) Normal vertical spacing of crackstitches is 450mm (6 brick courses).
- d) Where a crack is within 500mm of the end of a wall (as in A above) the HeliTie Bar is to be continued for at least 100mm around the corner and fixed into the adjoining wall.
- e) Where a crack is within 500mm of an opening (as in B above) the HeliTie Bar is to be bent back and fixed into the reveal.

Crack Stitching – General Application

helical
systems



Step 1

Slots are raked out or cut into horizontal mortar joints (bedjoints) to a depth of between 35-45mm and at 355mm or 4 brick courses vertical spacing.



Step 2

The slots are then vacuumed out and thoroughly flushed with water.



Step 3

The 2 part **HeliGrout 25** is mixed in the tub provided.



Step 4

A bead of **HeliGrout 25** is inserted into the back of the slot using a **HeliGrout Gun** with the grout nozzle attachment.



Step 5

The **HeliTie™ Bar** is pushed into the grout to obtain good coverage.



Step 6

A bead of **HeliGrout 25** is inserted over the exposed bar and ironed into the slot using a finger trowel.



Step 7

The slot is filled with **HeliGrout 25** leaving sufficient depth for repointing.



Step 8

A colour matched mortar can be used to repair fractured bricks.



Step 9

The slot is then repointed matched as closely as possible to existing.

