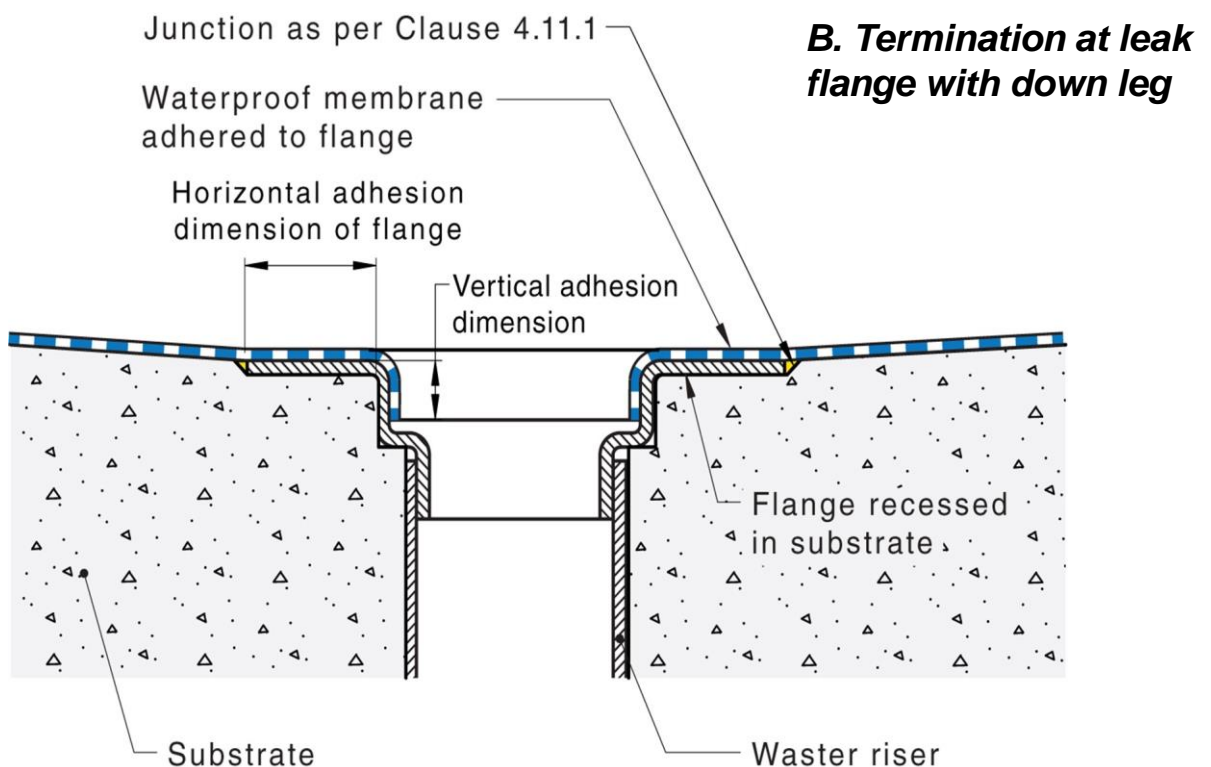
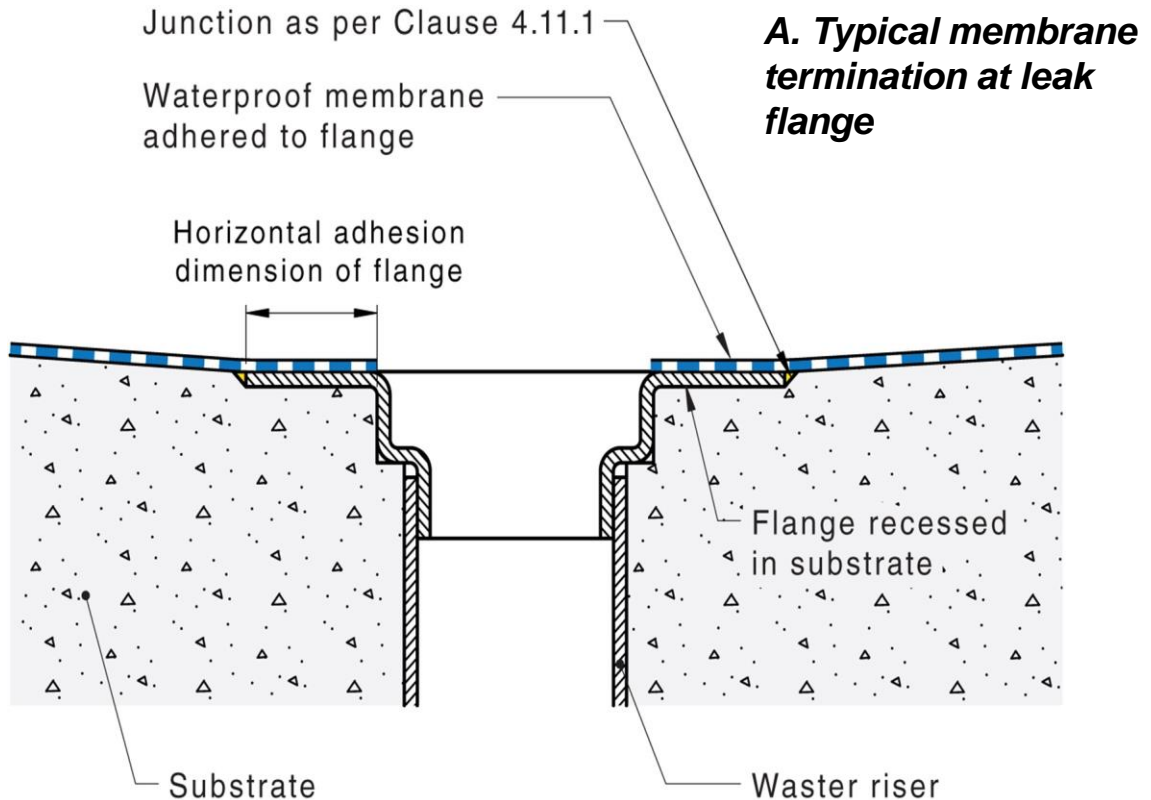


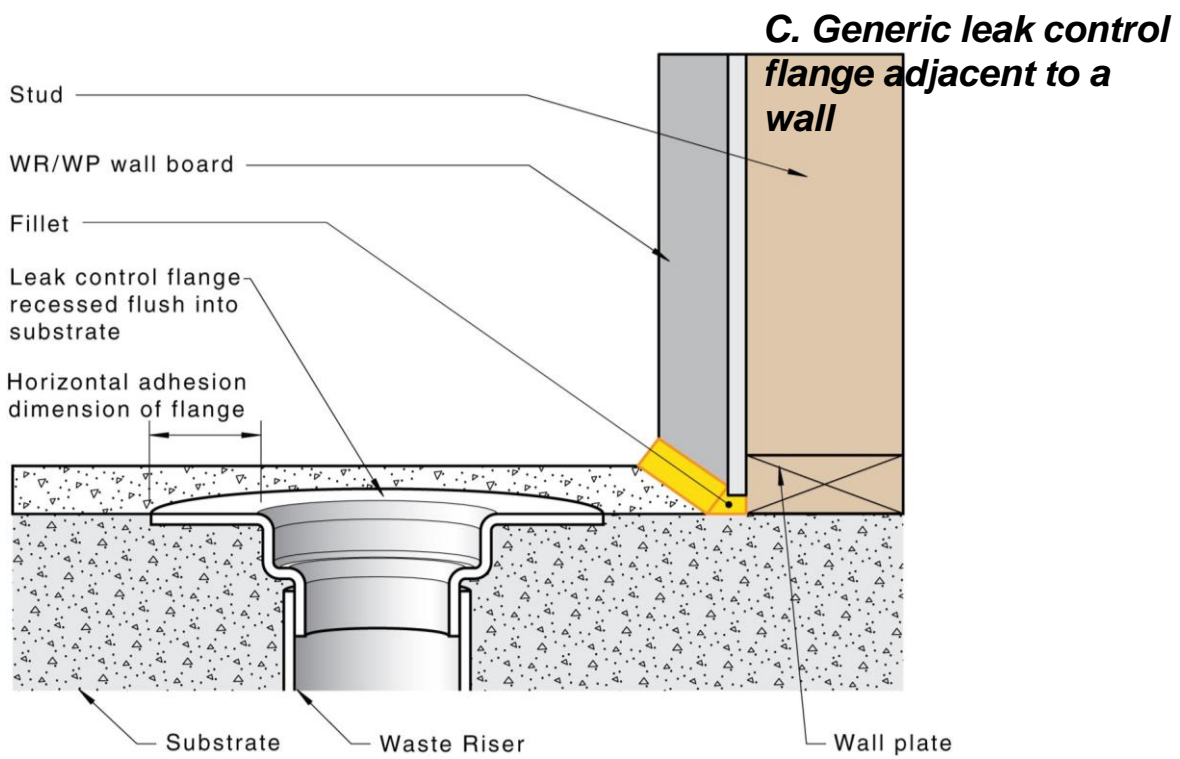
Draft Drawings from AS3740 : 2021



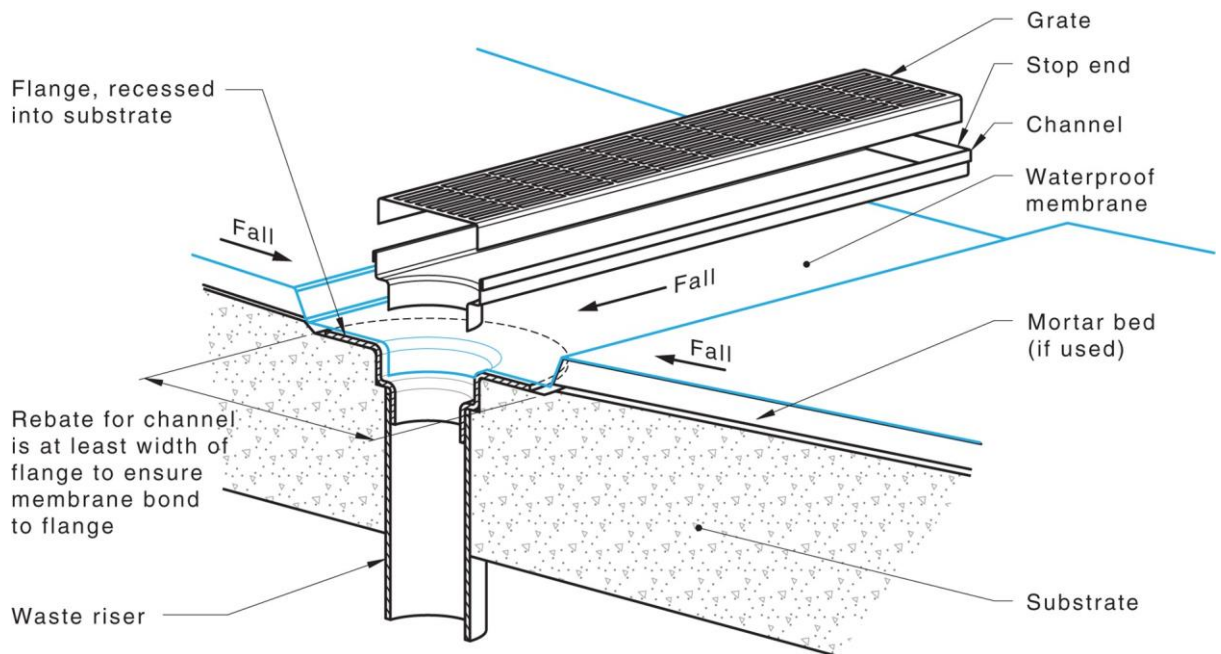
The drawing below are from the Draft documents prior to publishing the current AS3740:2021 Standard. These diagrams are **NOT OFFICIAL**, just informative as a quick reference. Please buy a copy of the Standard

4.3.1 Leak Control Flanges

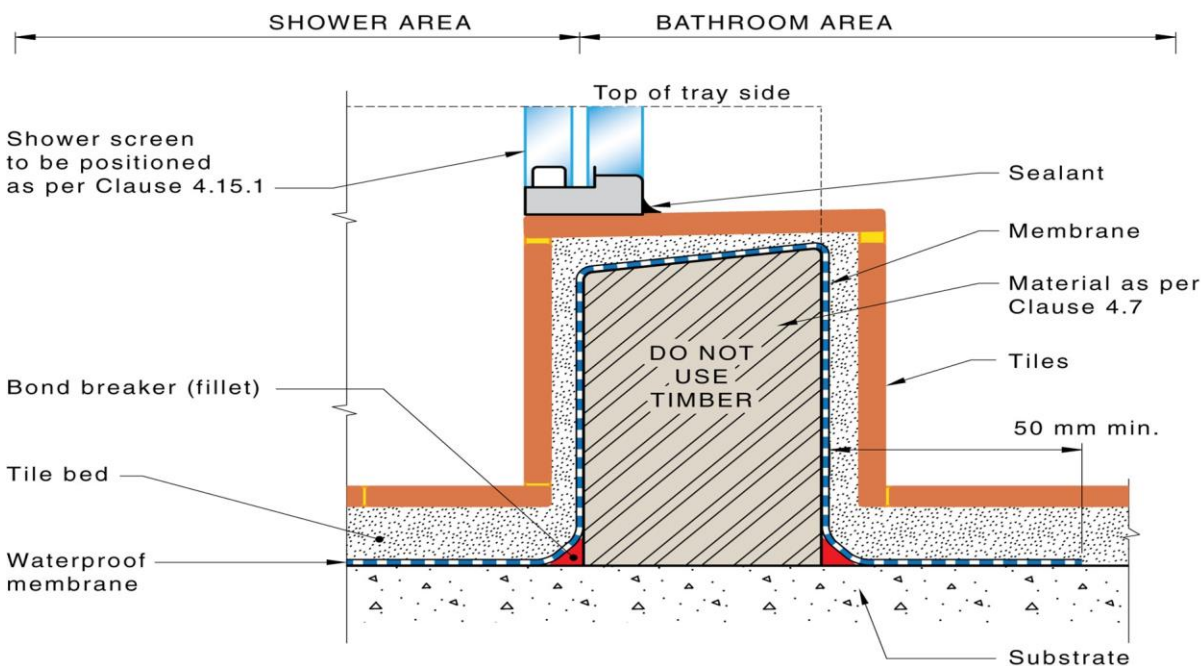




4.3.2 Linear drain single outlet centrally located

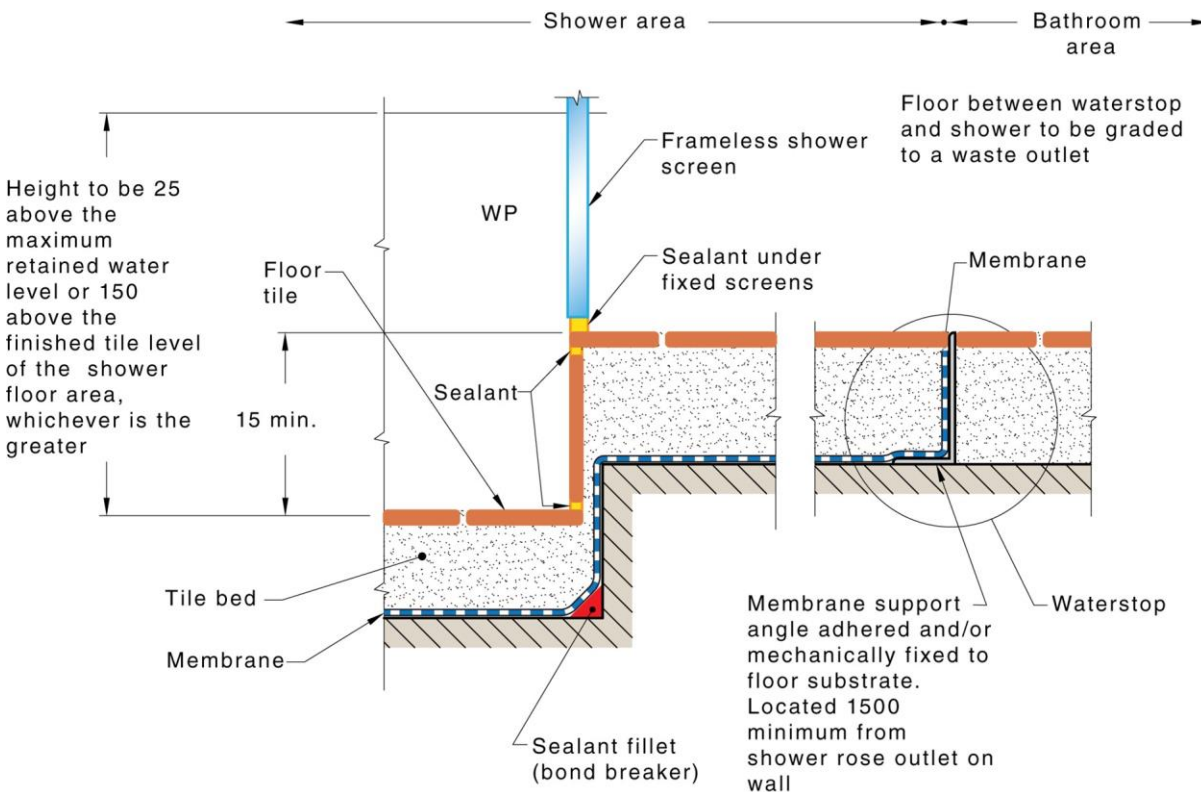


4.6.2 Shower with a hob liquid membrane

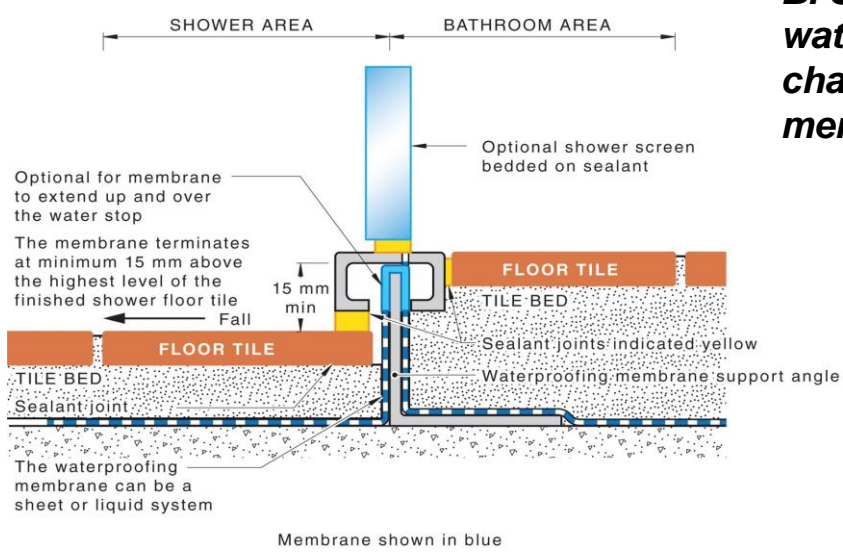


4.8.2 Waterstop for Unenclosed shower

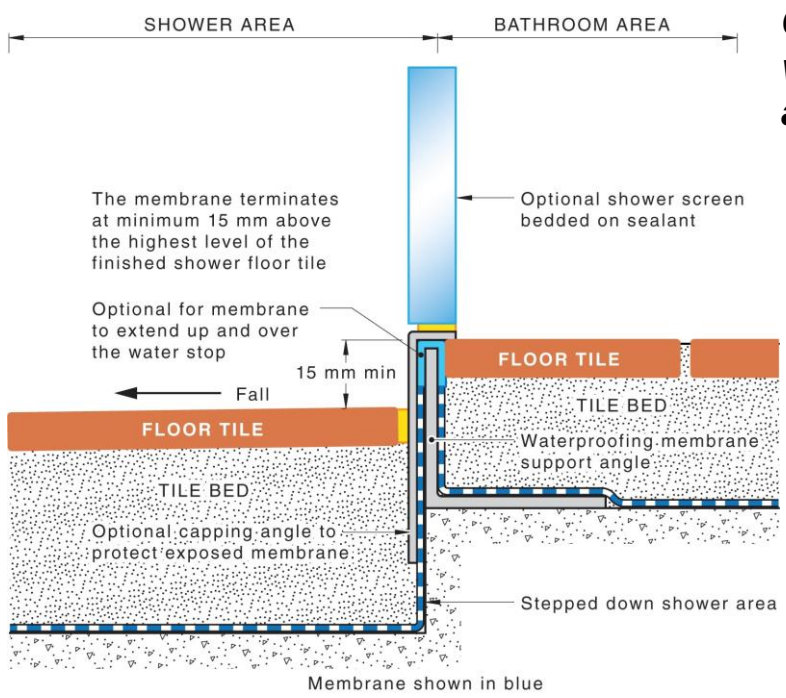
A. Unenclosed shower membrane below tile bed



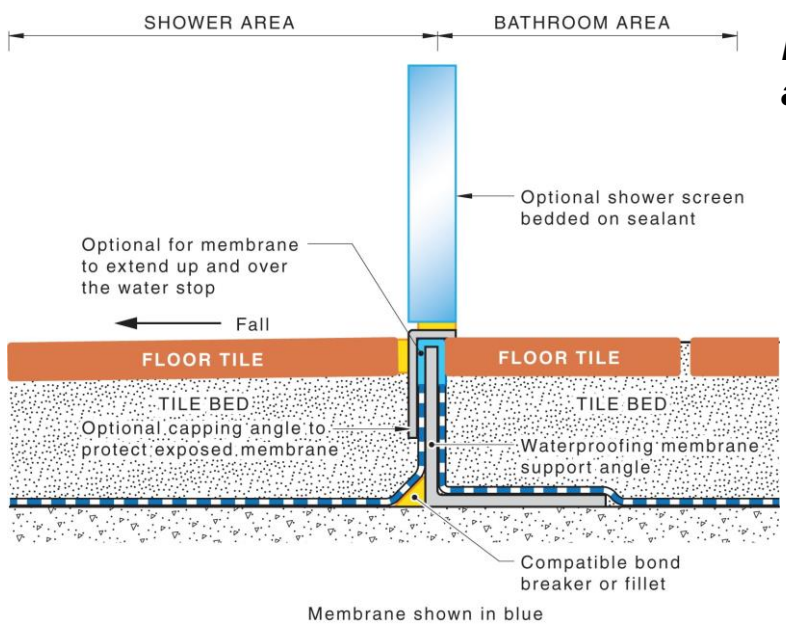
B. Step Down shower waterstop and cover channel liquid membrane



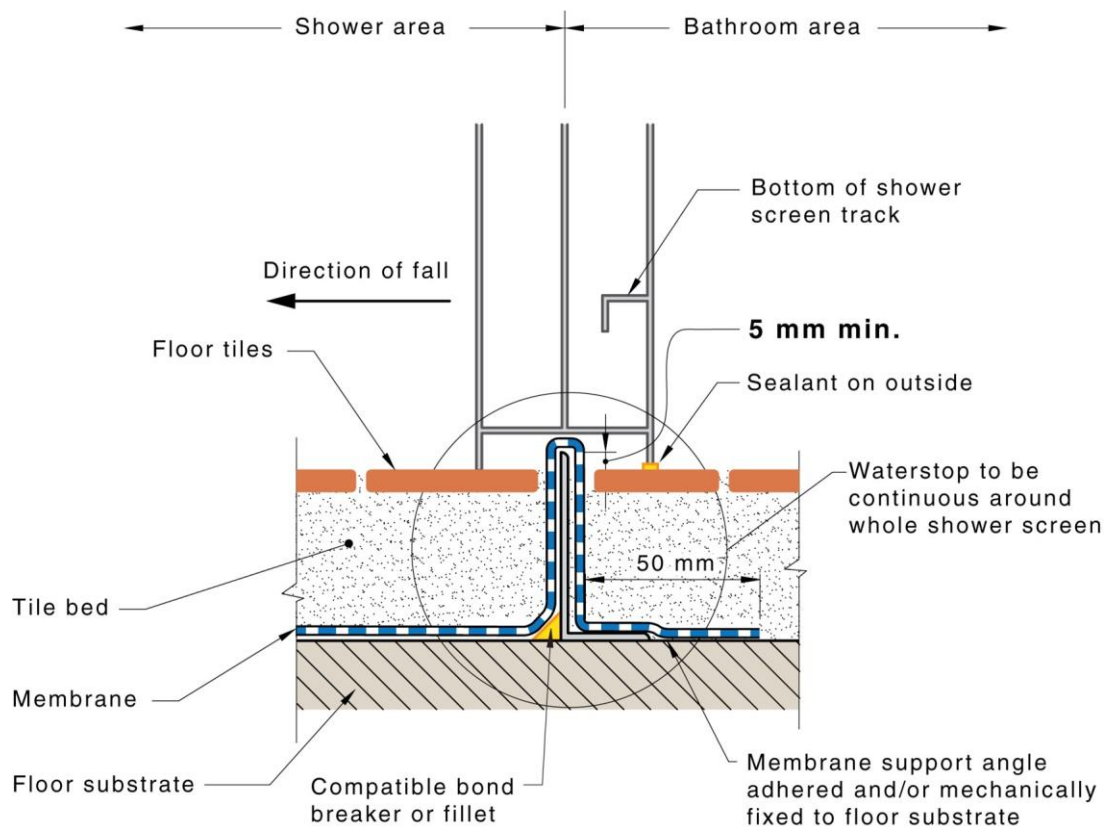
C. Step-down shower waterstop and cover angle



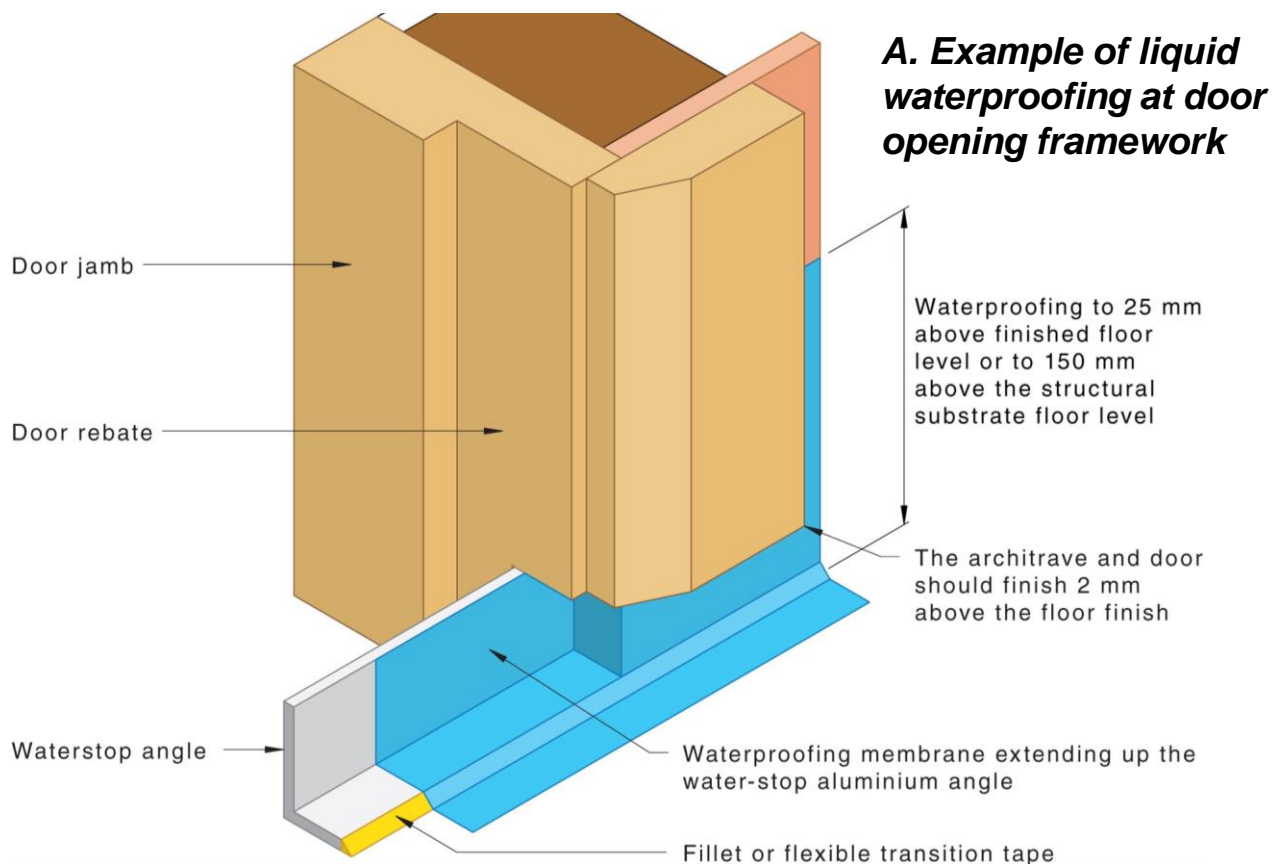
D. Shower waterstop and cove angle



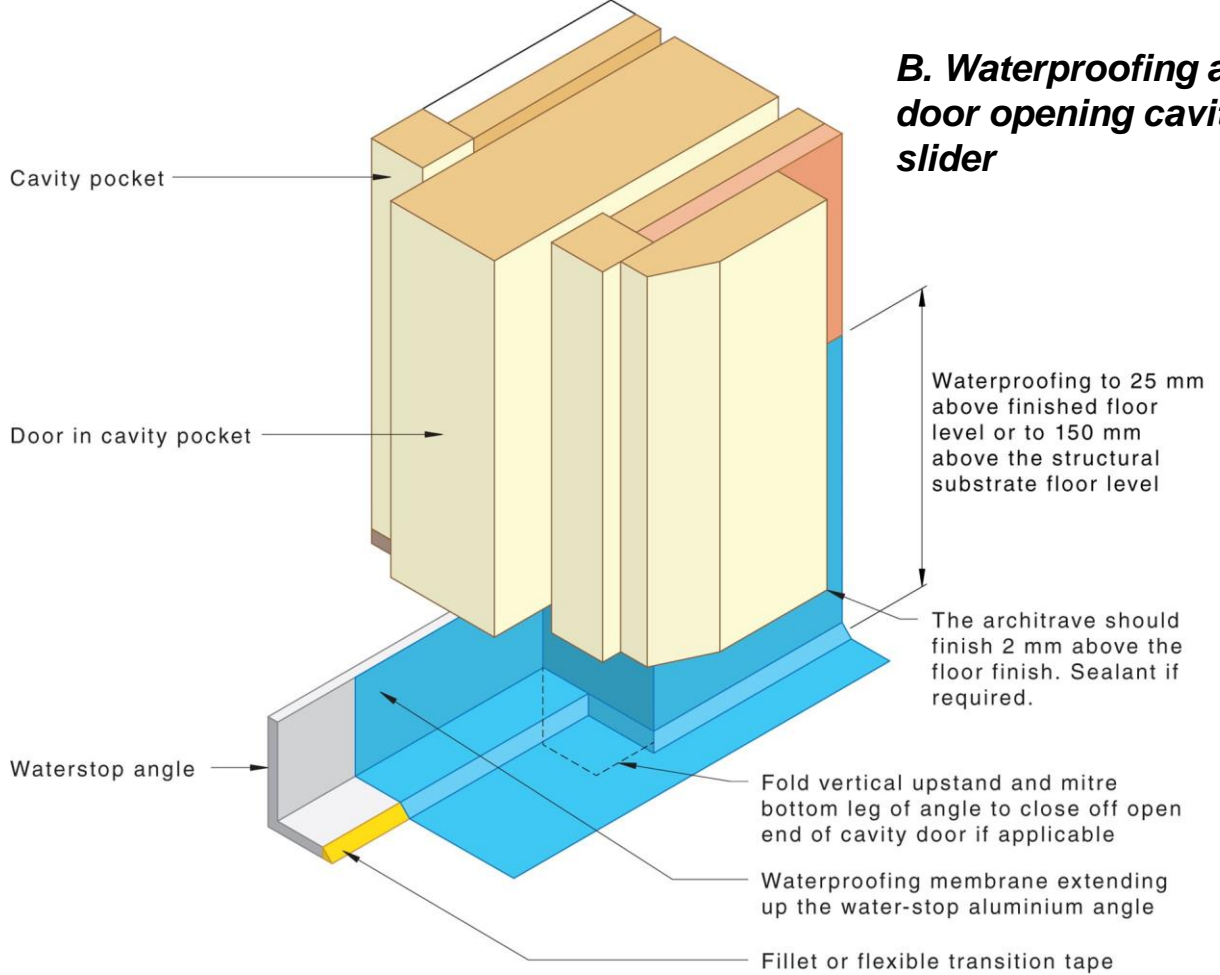
4.8.4 Waterstop for enclosed showers without hobs or set-downs



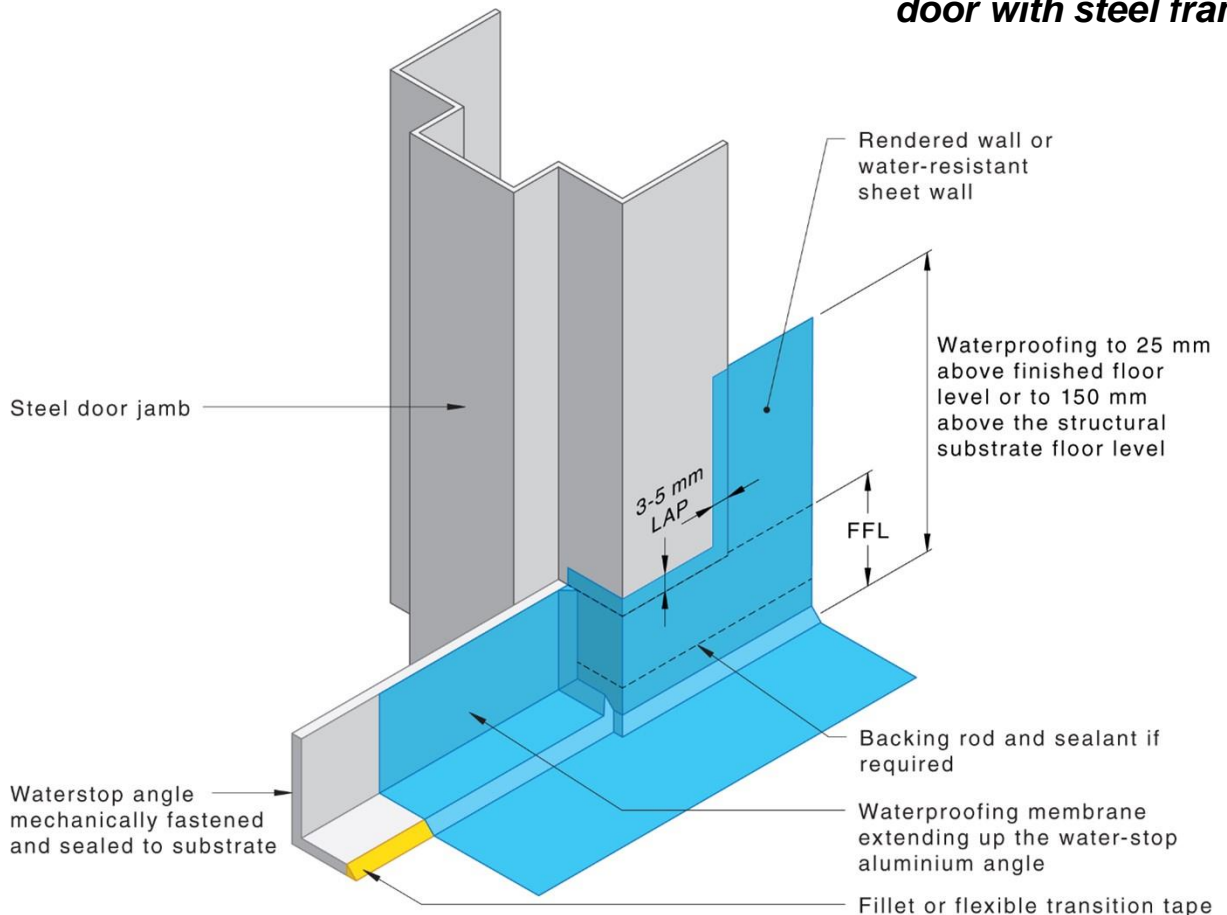
4.9.1 Perimeter flashing at floor level openings



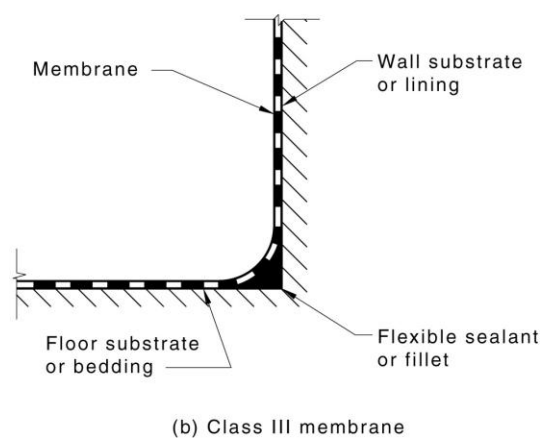
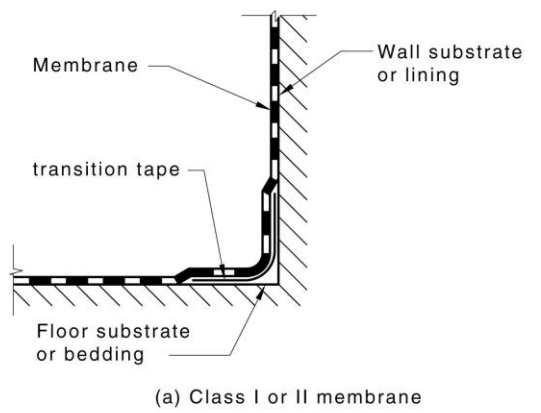
B. Waterproofing at door opening cavity slider



C. Waterproofing at door with steel frame

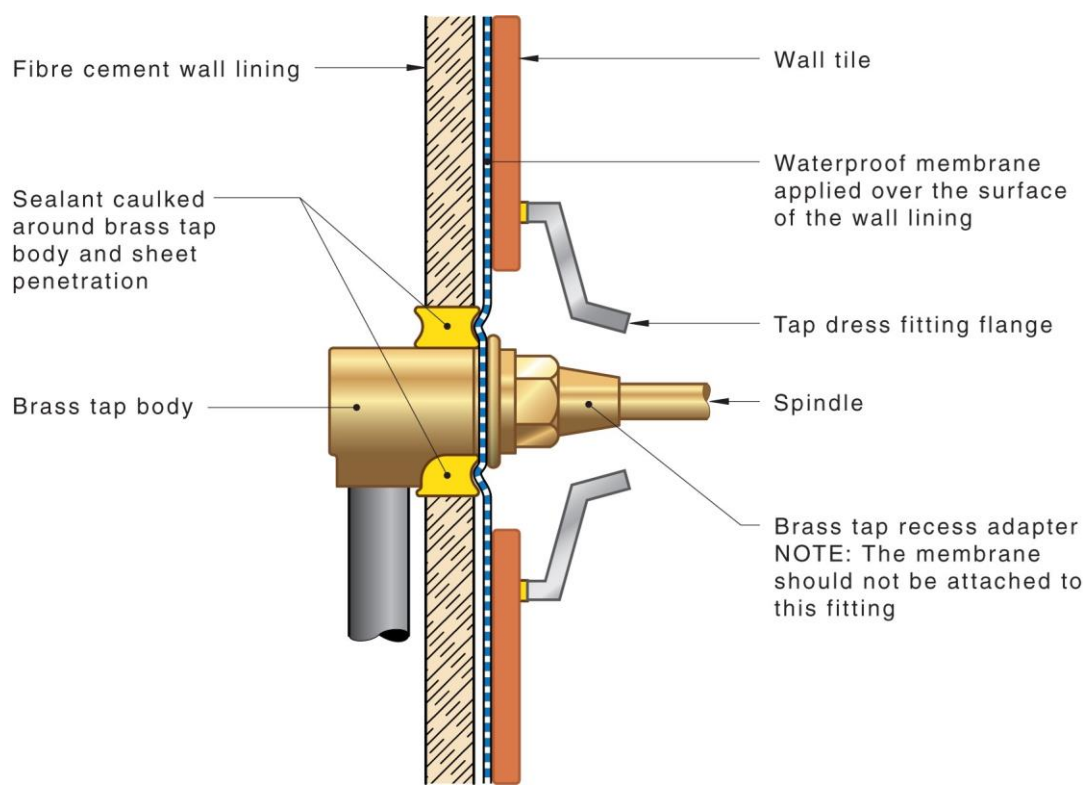


4.10 Fillets and bond breakers

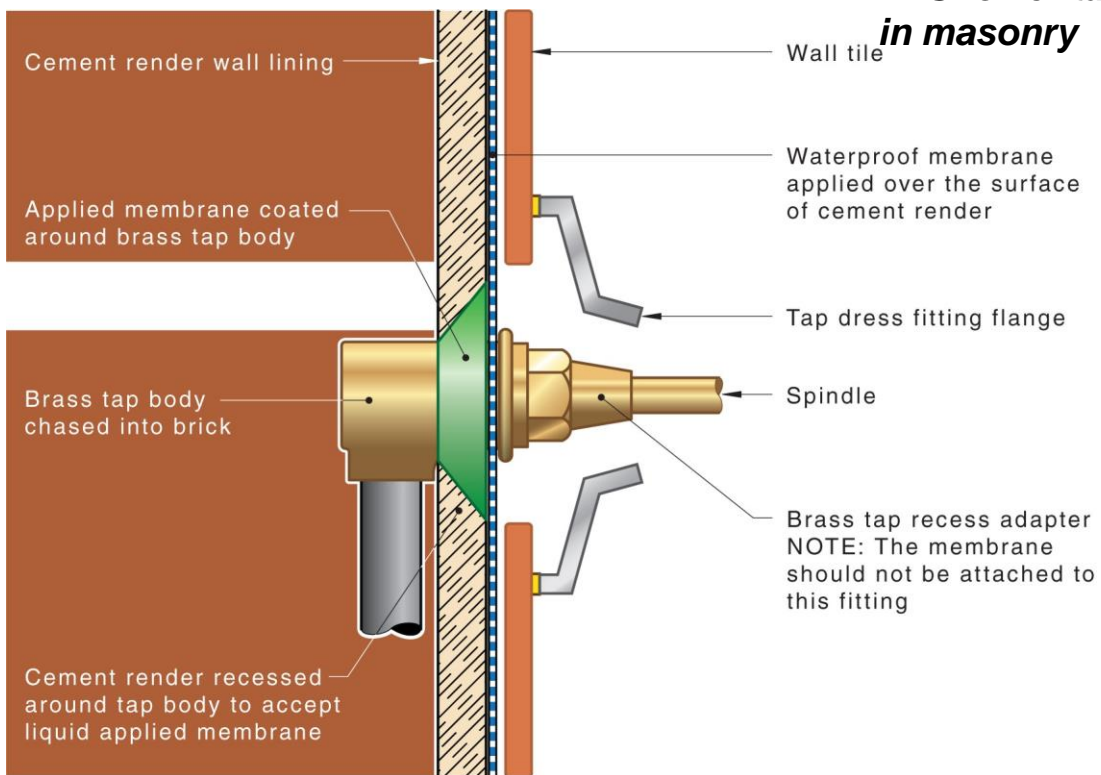


4.12 Penetrations

A. Shower tap installed in frame wall

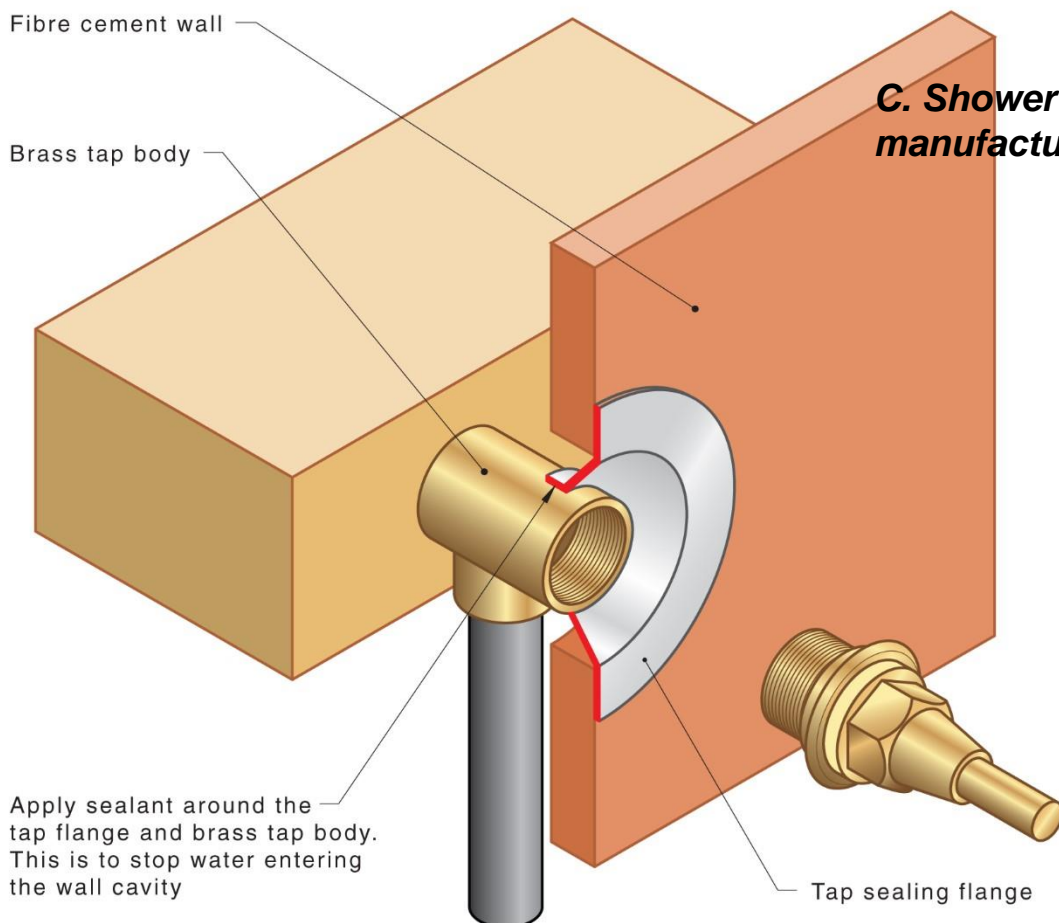


B. Shower tap installed in masonry

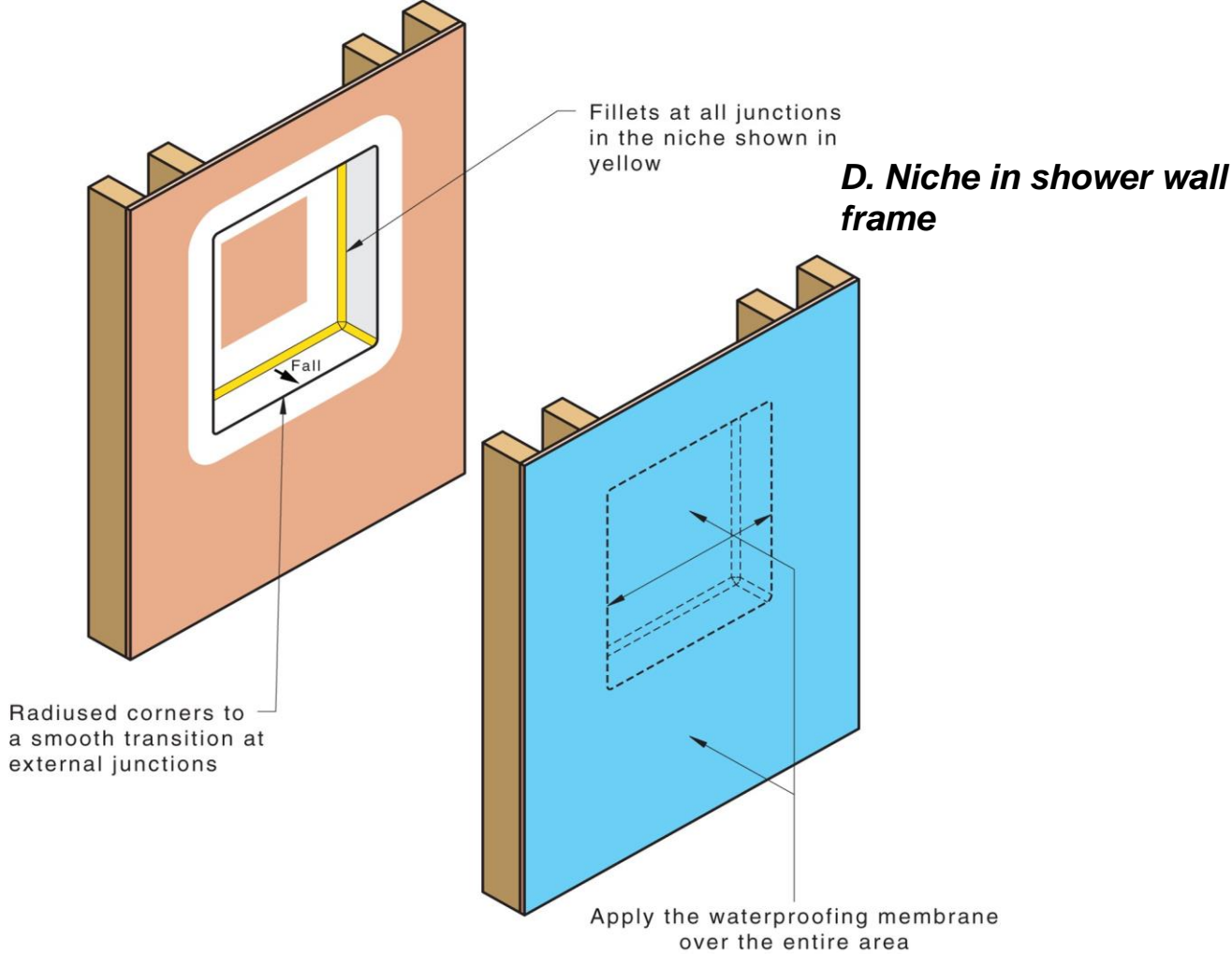


Manufactured tap dealing flanges used in shower areas and around bath taps and spots where shower is installed.

C. Shower tap detailed manufactured flange

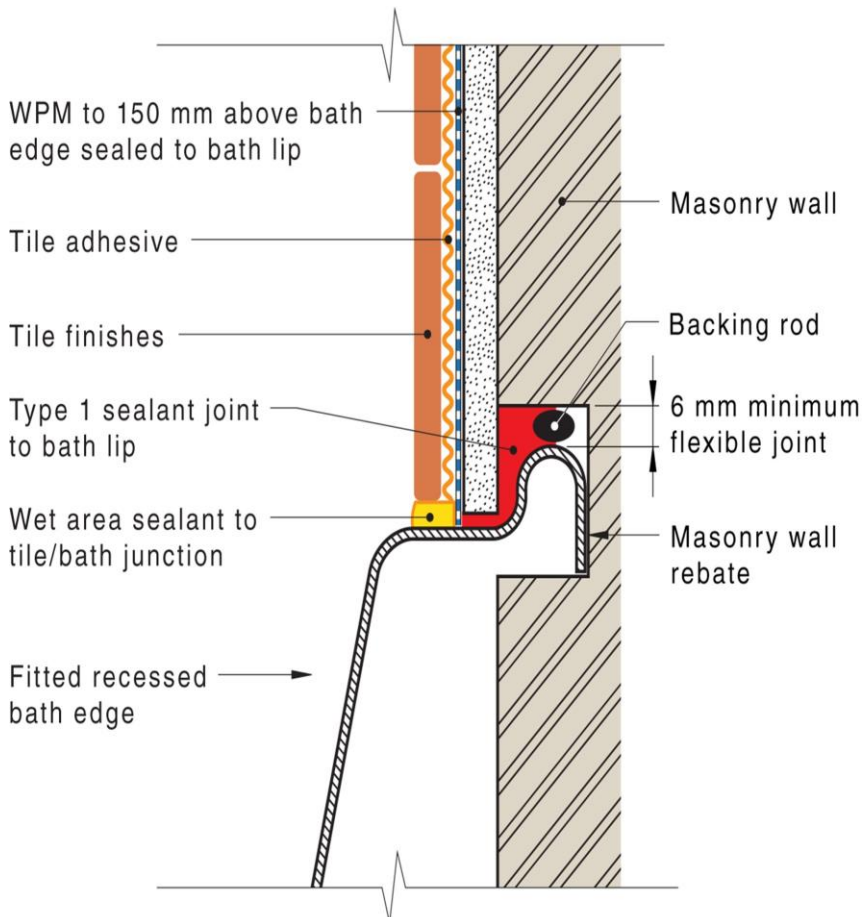


Tap flanges can be covered with waterproof membrane in accordance with the membrane manufacturers instructions, or sealed to the surface of the applied membrane

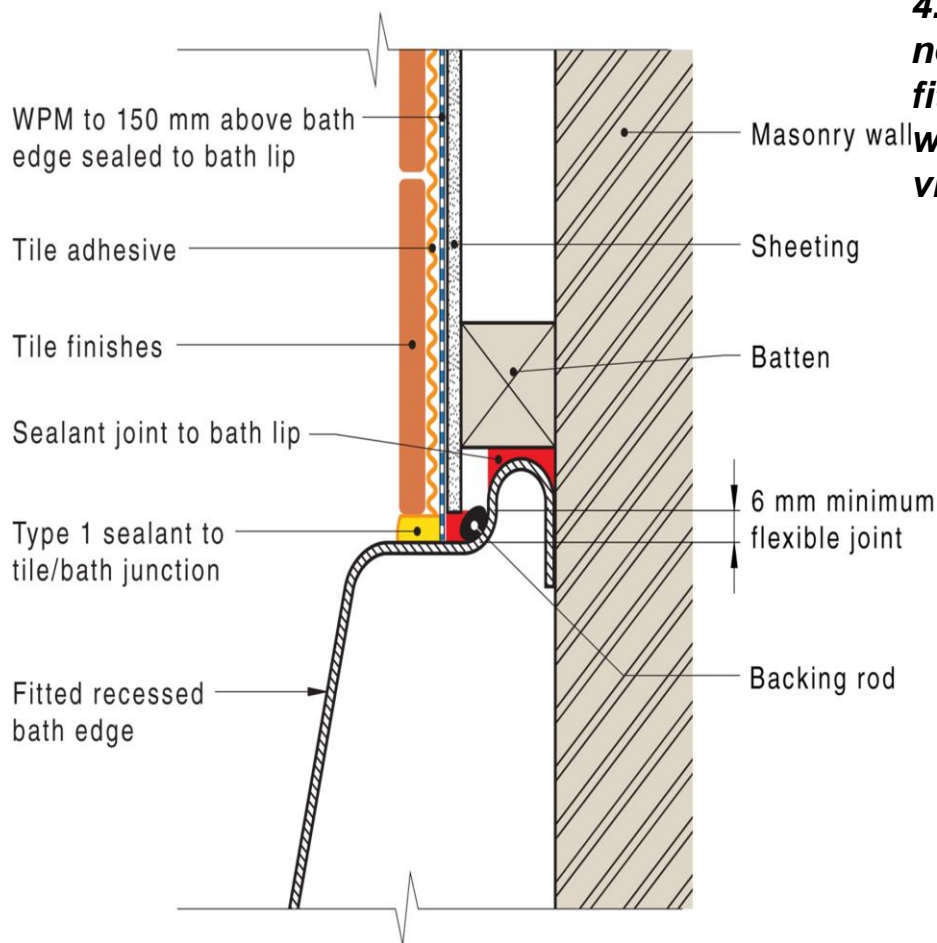


4.13 Baths and Spas

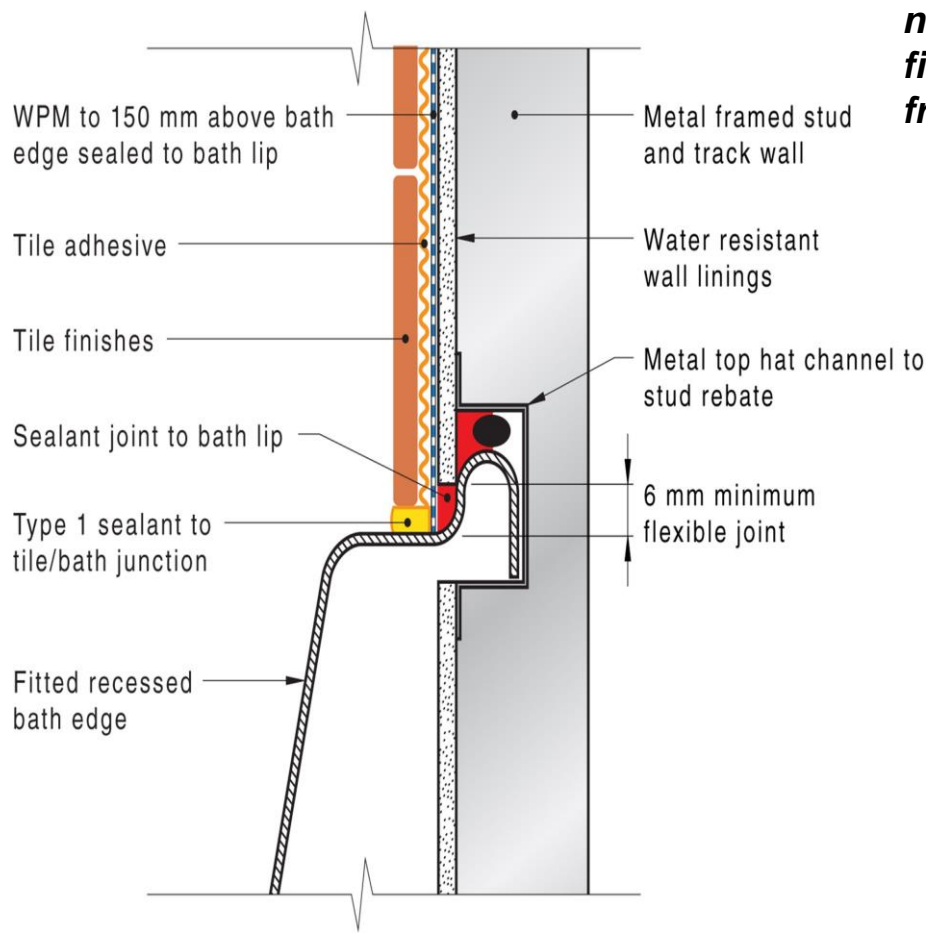
4.13.2.2 (A). Bath with no shower over it – fitted bath – masonry wall



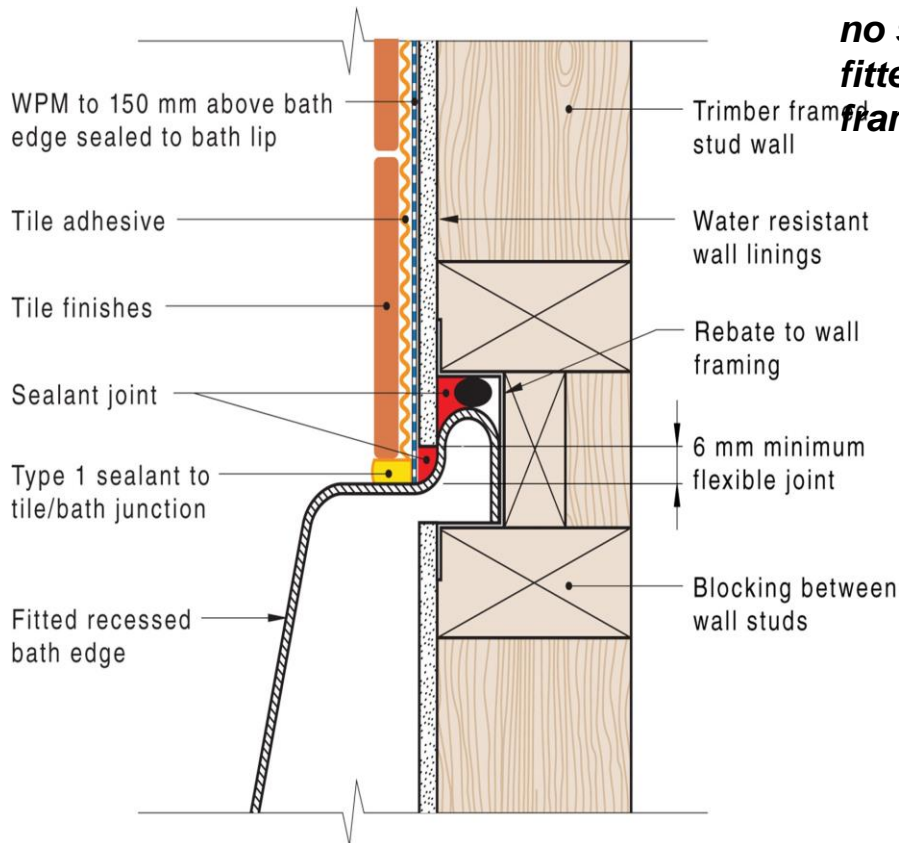
**4.13.2.2 (B) Bath with
no shower over it – masonry
wall with sheet spaced
via batons**



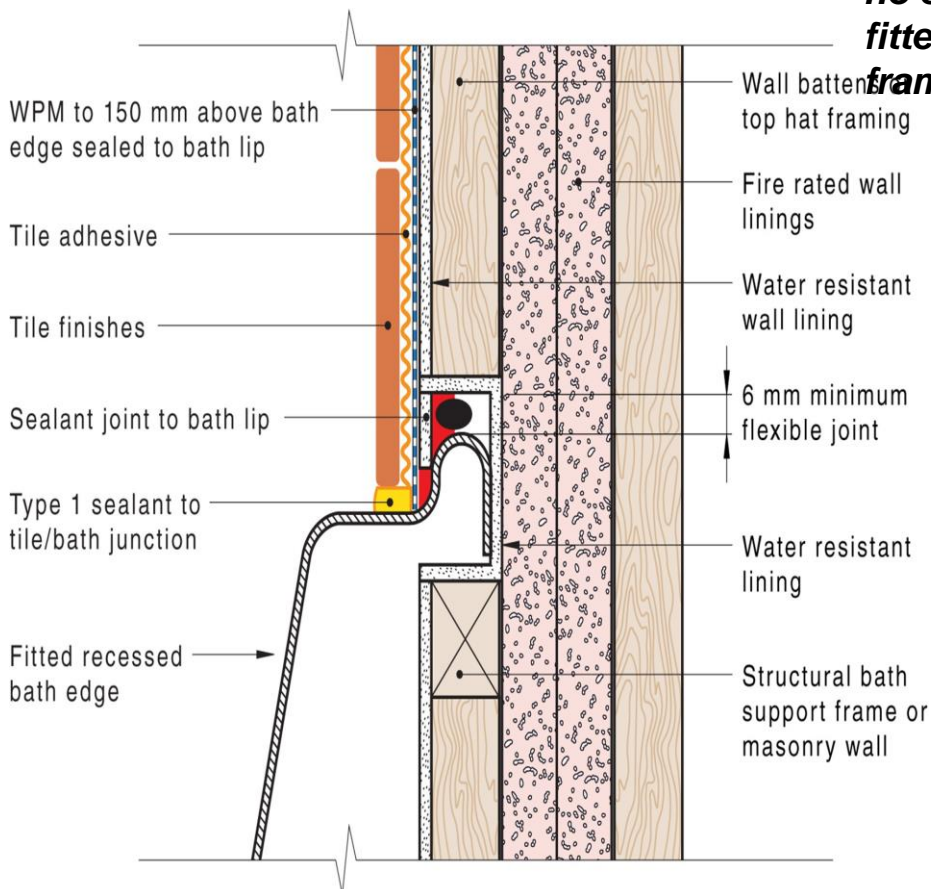
**4.13.2.2 (C) Bath with
no shower over it – fitted bath – metal
framed wall**



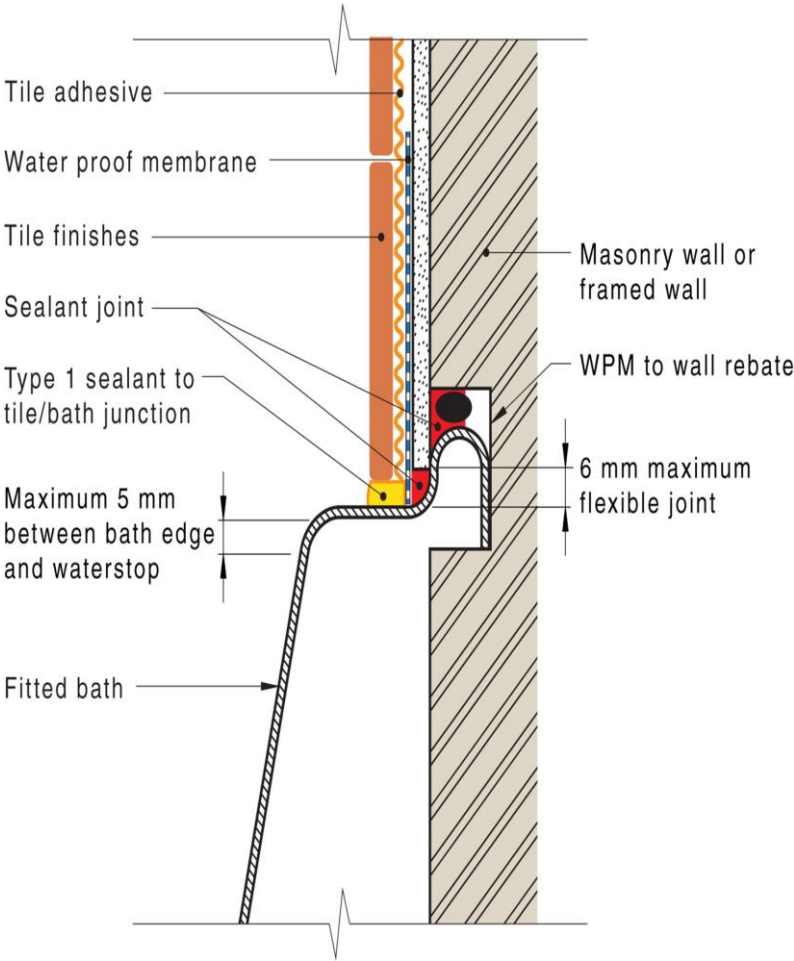
4.13.2.2 (D) Bath with no shower over it - fitted bath – timber framed wall



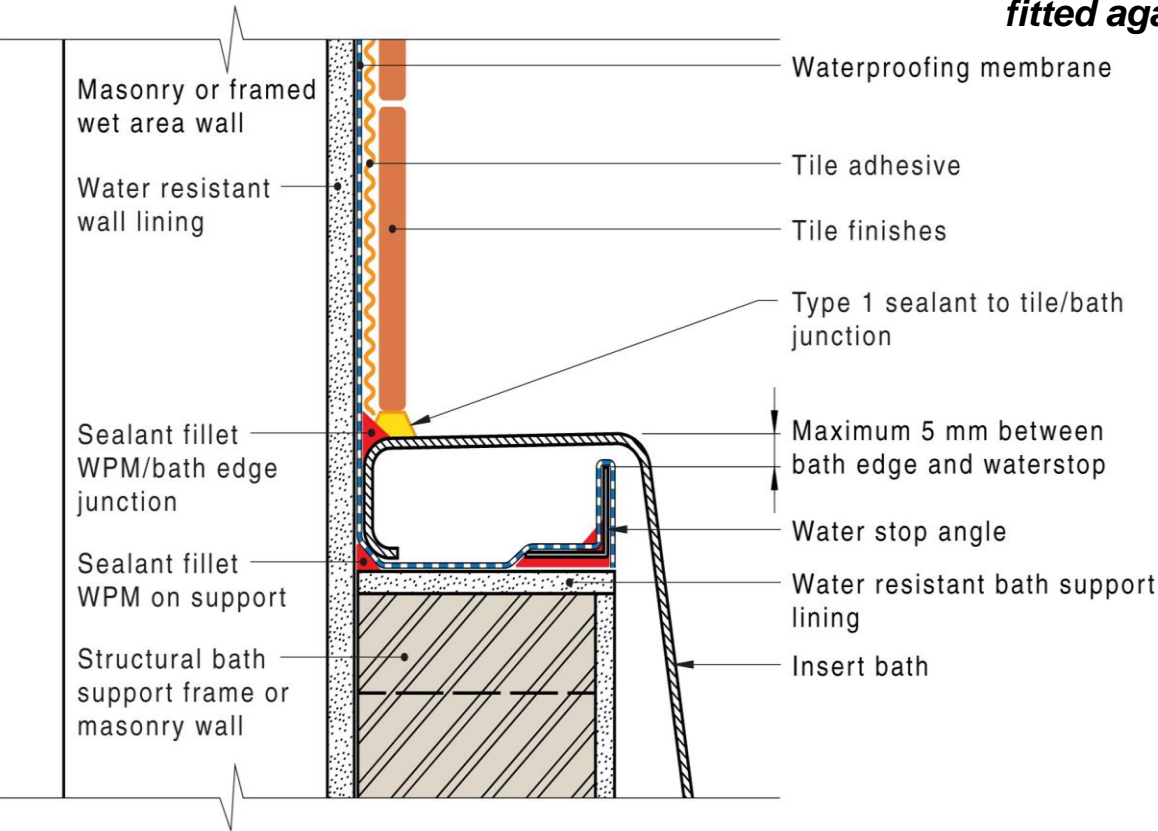
4.13.2.2 (E) Bath with no shower over it - fitted bath – fire rated framed wall



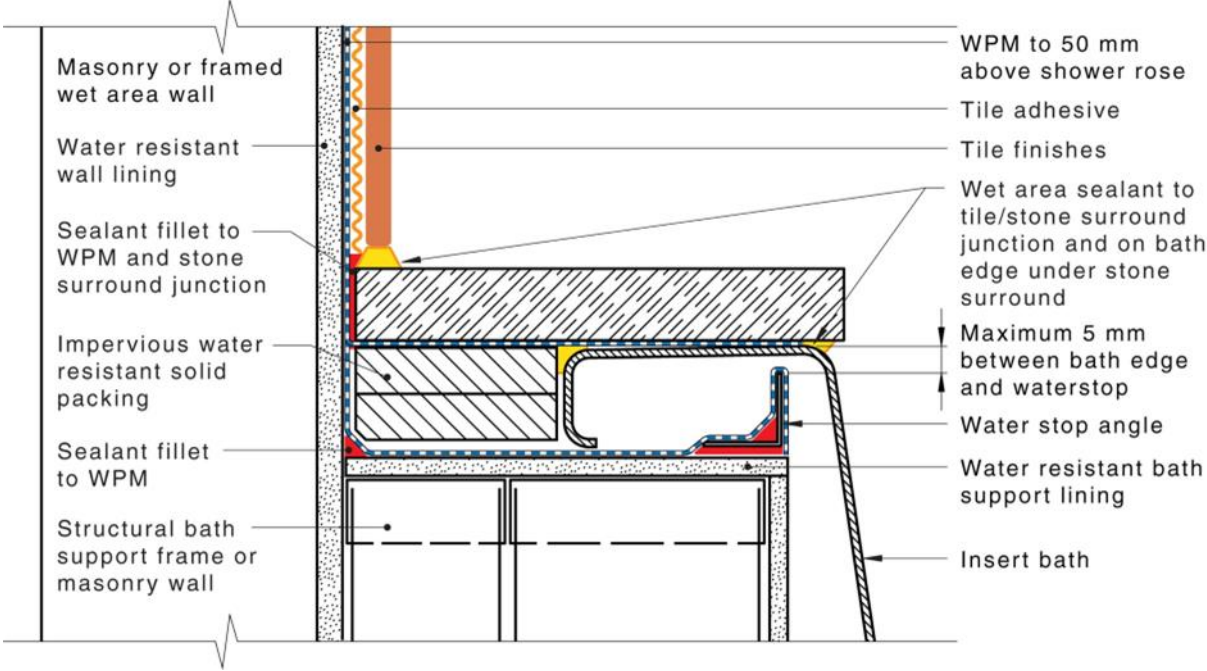
4.13.3 (A) Shower over bath – fitted bath framed or masonry walls



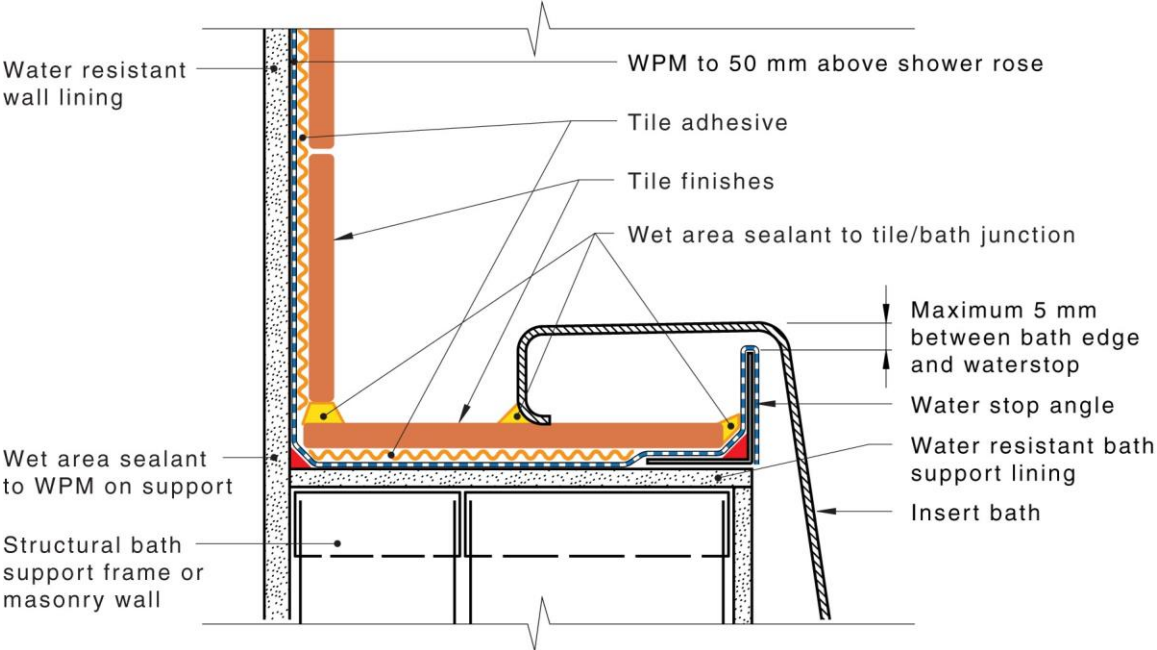
4.13.3 (B) Shower over bath – fitted bath – fitted against the wall



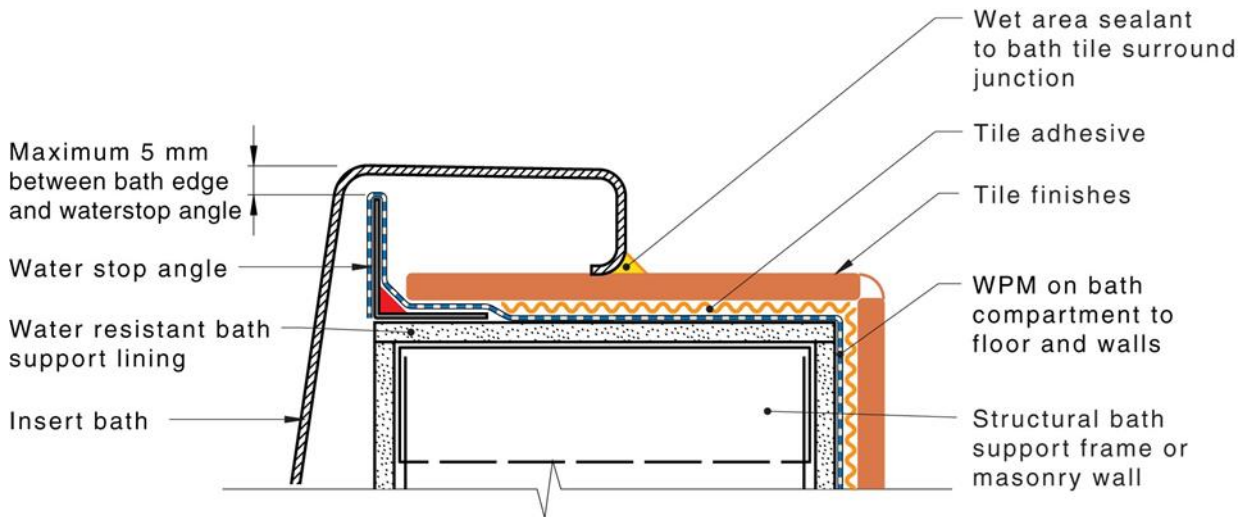
14.13.3 -C. Shower over bath – insert bath-stone surround



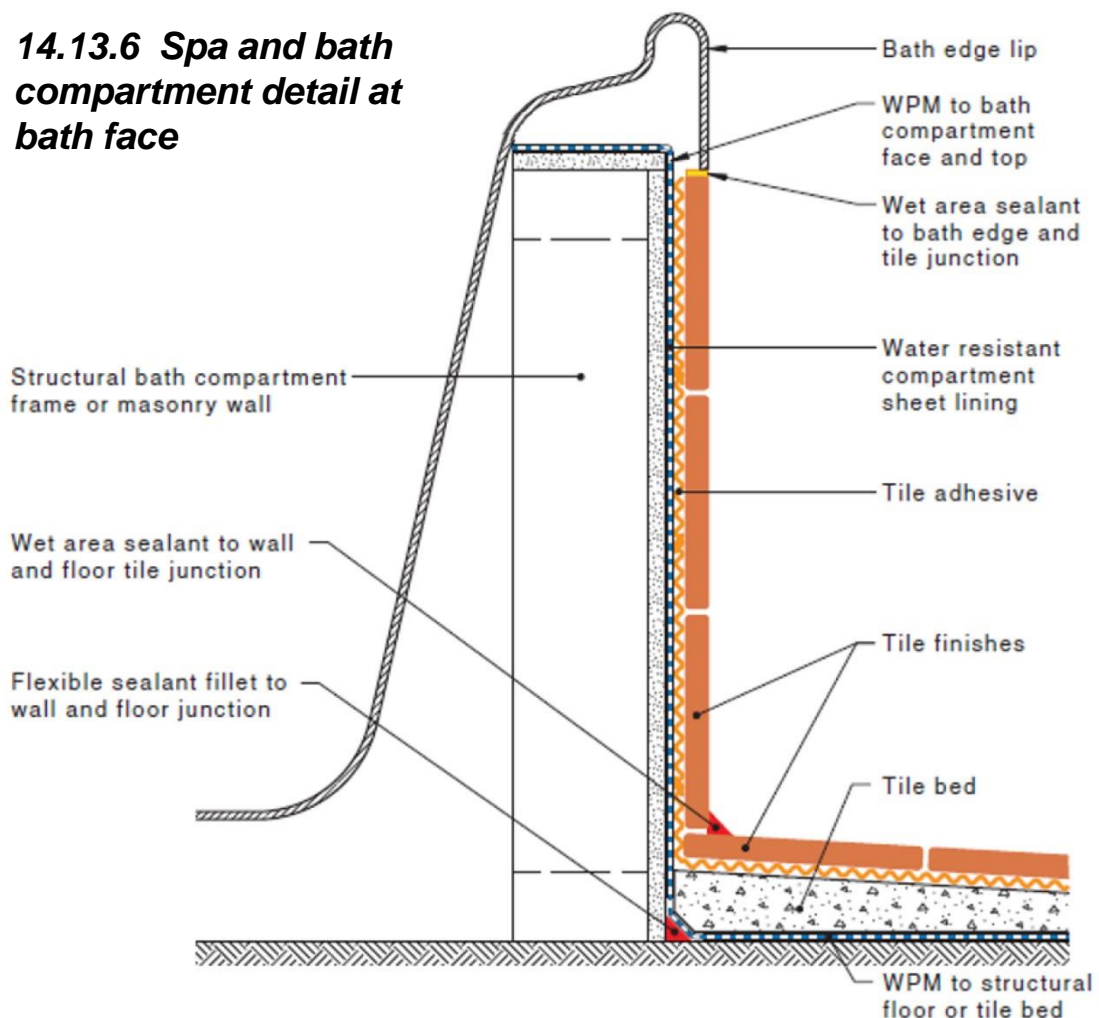
14.13.3 -D. Insert bath – tile surround



14.13.3 -E. Shower over bath – bath compartment wall

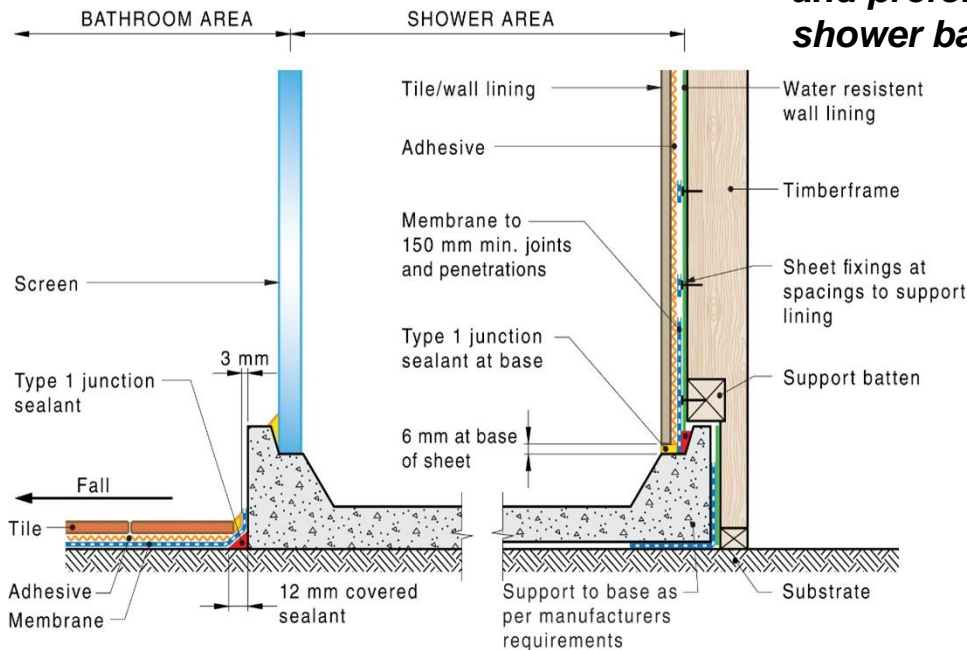


14.13.6 Spa and bath compartment detail at bath face

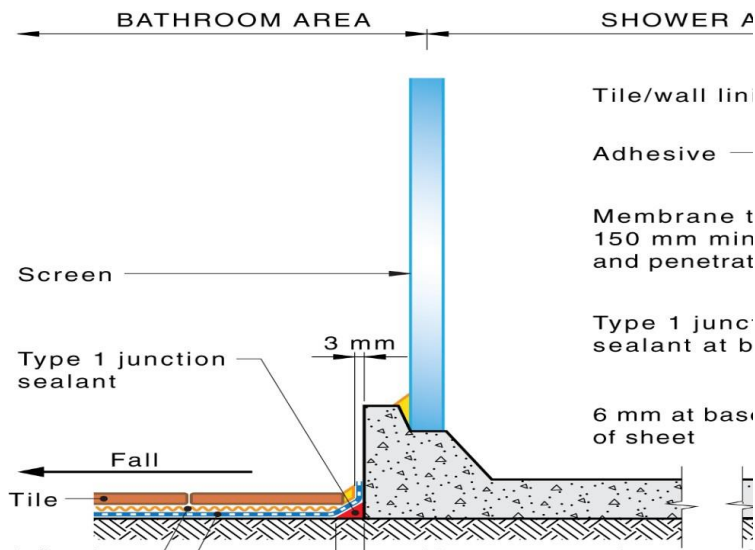


4.14 Performed Shower Base

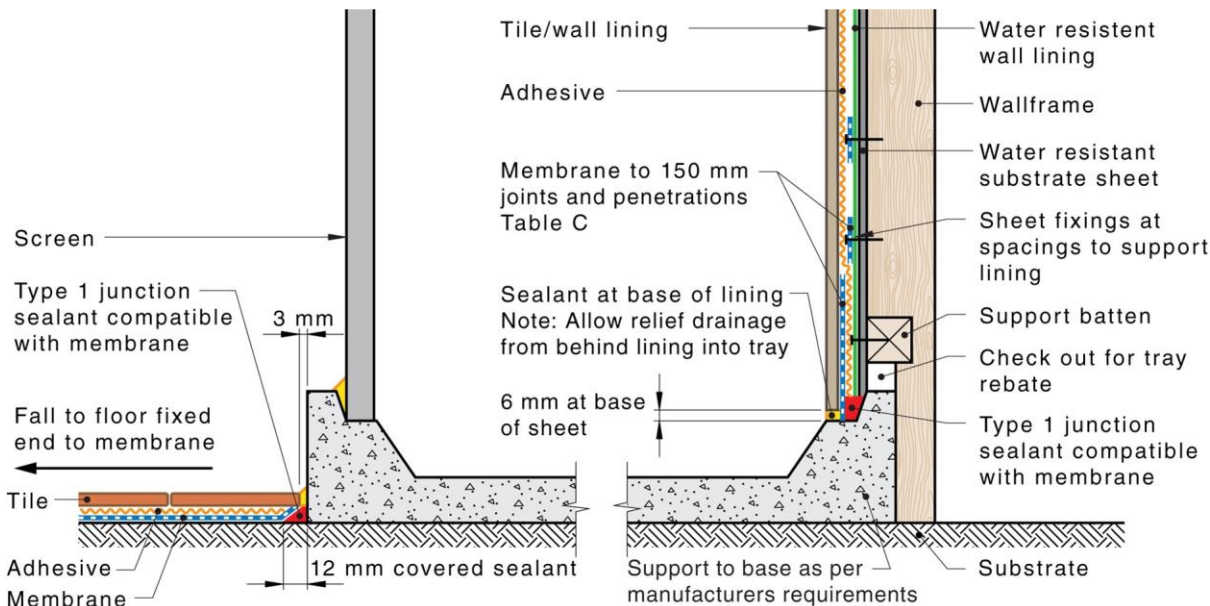
A. Section through stud wall with self-supporting prefinished wall panels and preformed cast shower bases



B. Section through rendered masonry wall and preformed or cast shower bases

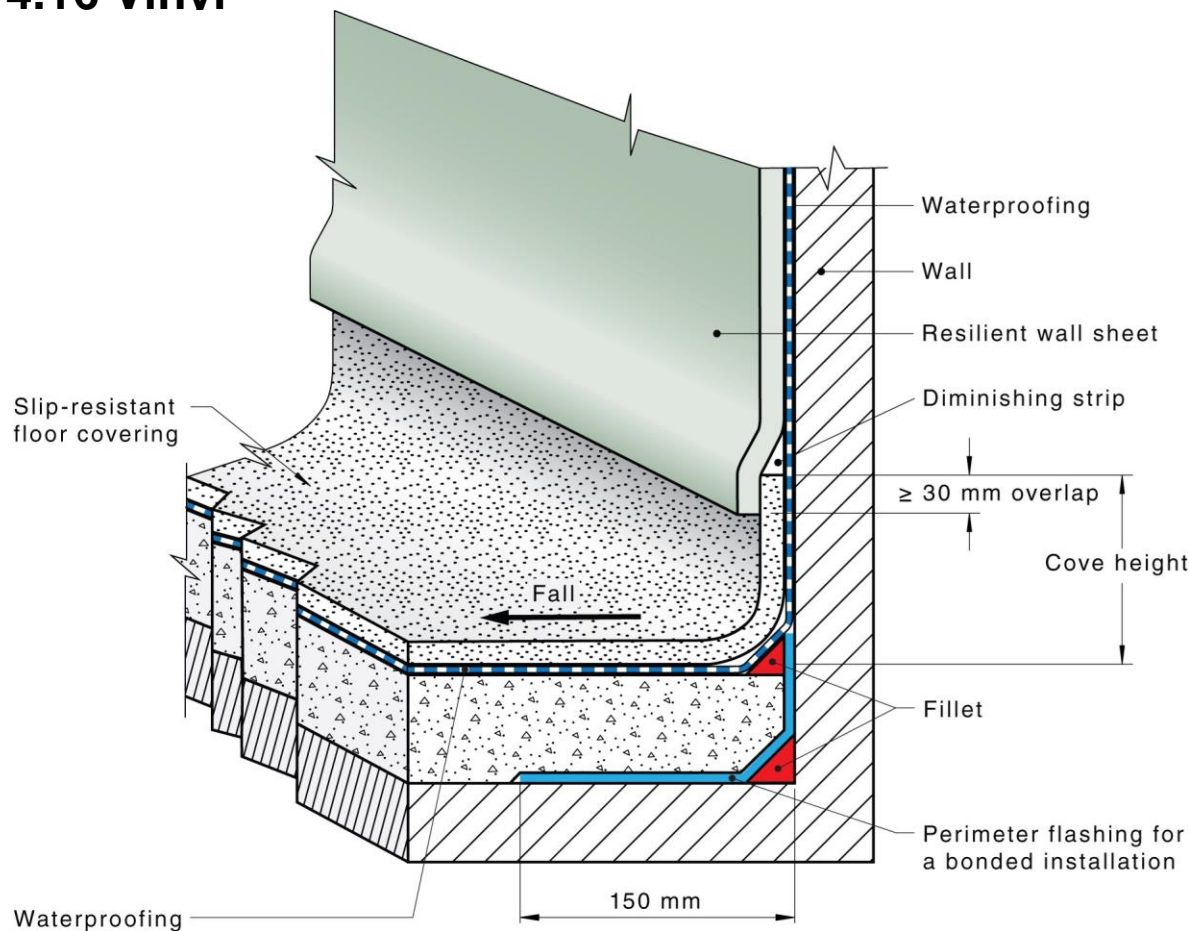


C. Preformed shower base checked into wall, frame and render

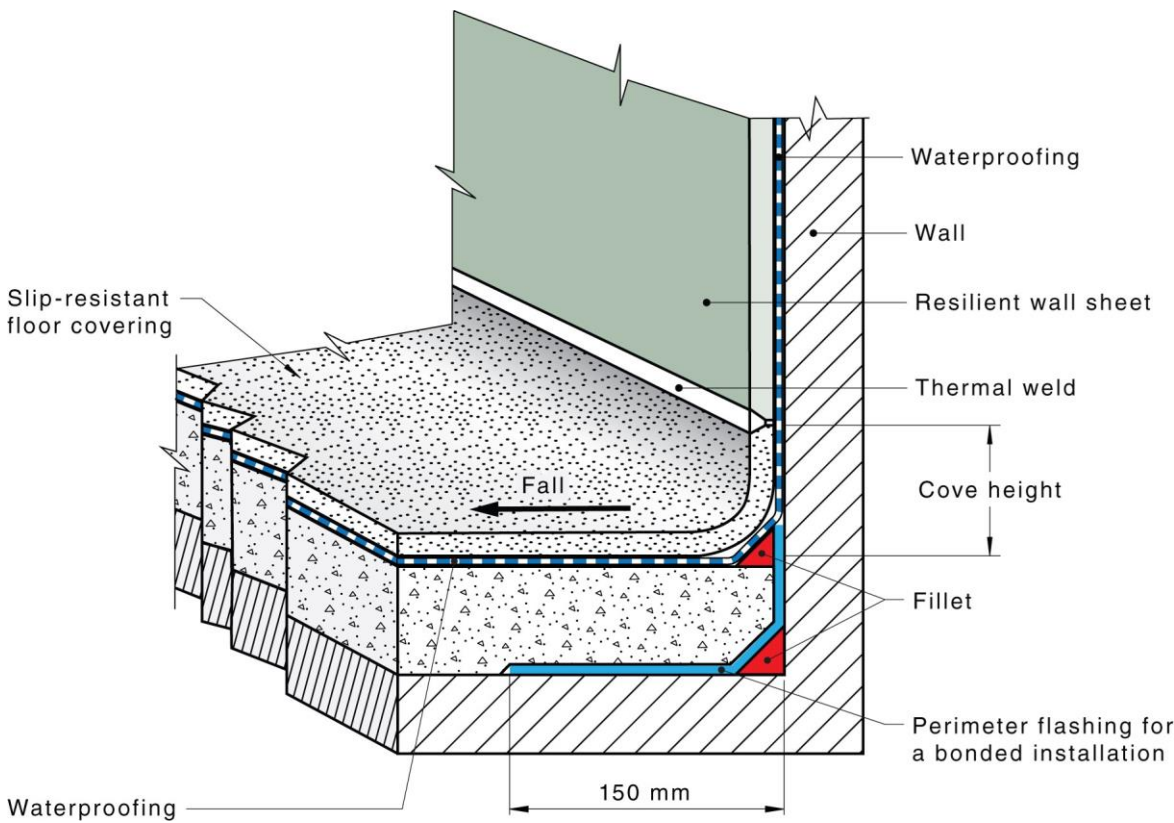


4.16 Vinyl

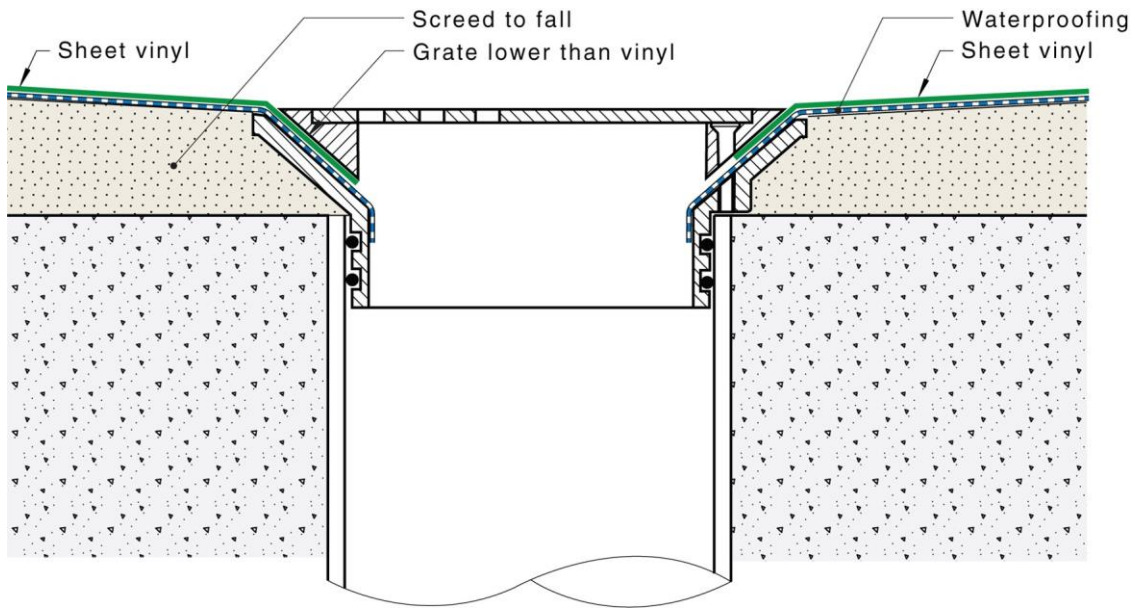
A. Vinyl installation – overlap method



B. Vinyl installation – welded method

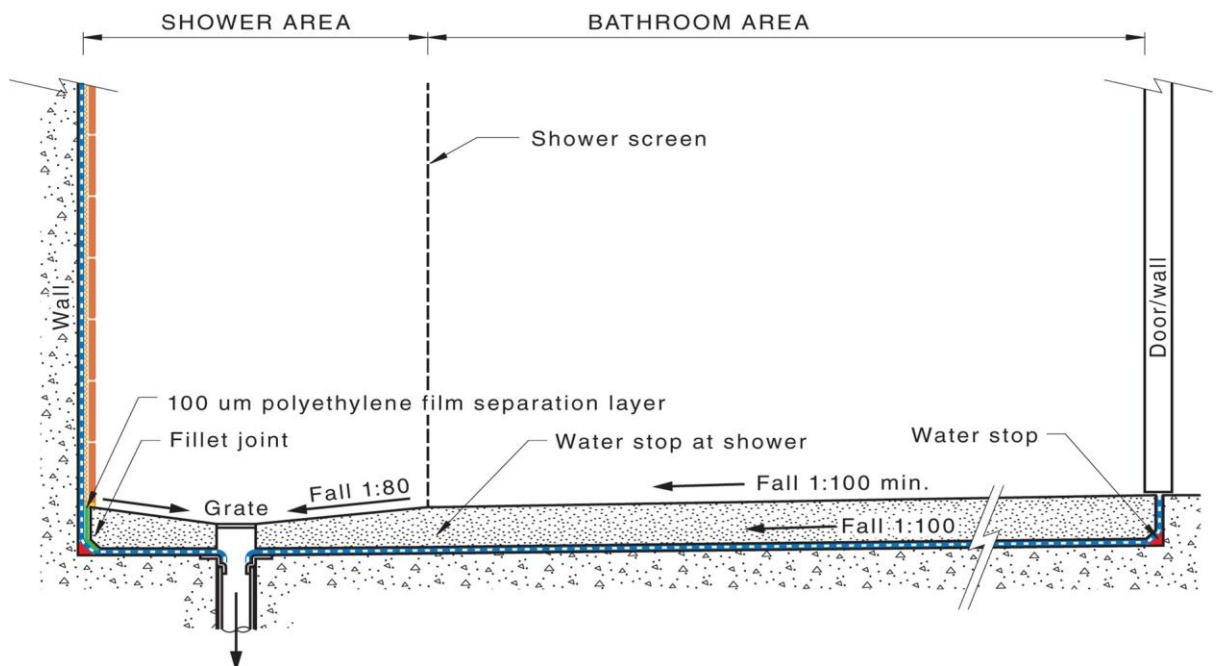


**C. Vinyl installation –
push-in vinyl sheet waste**

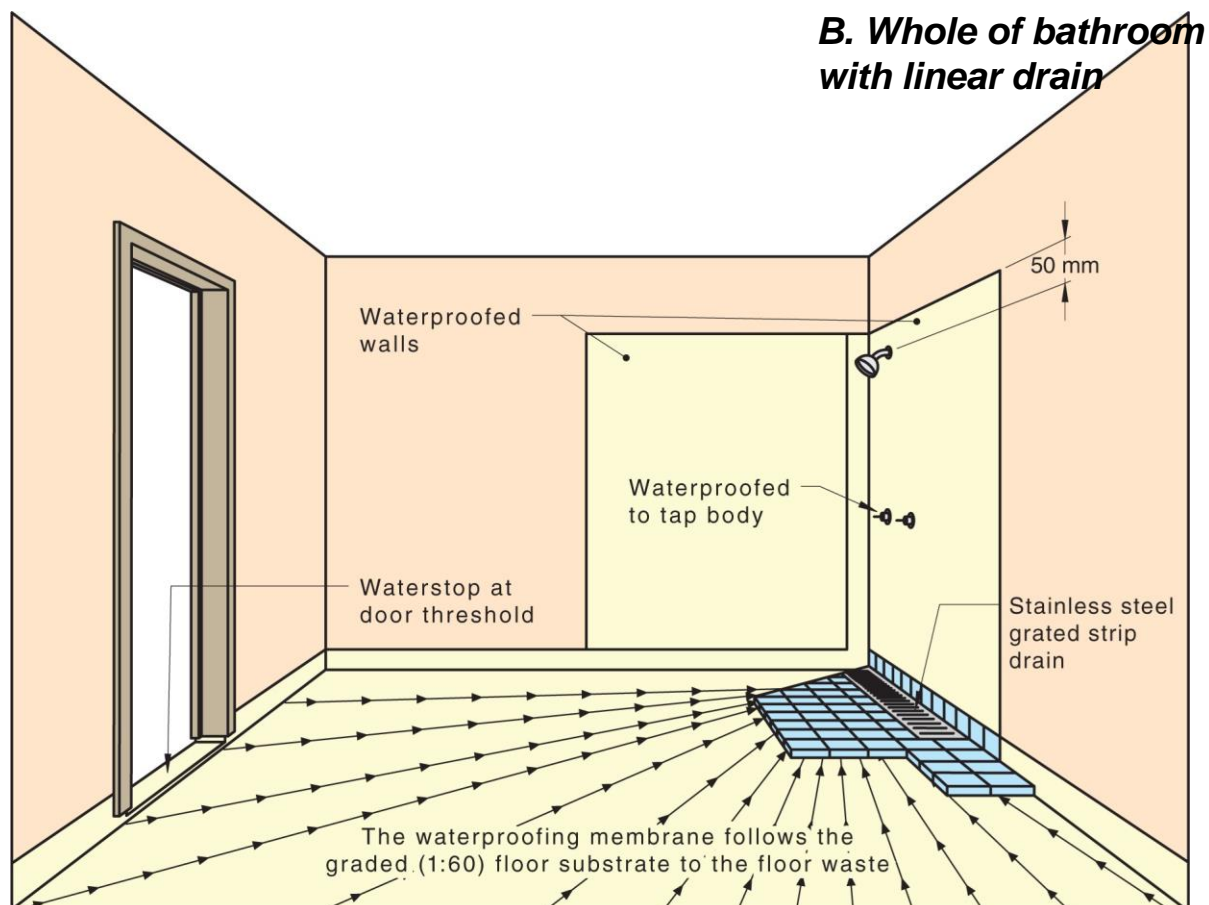
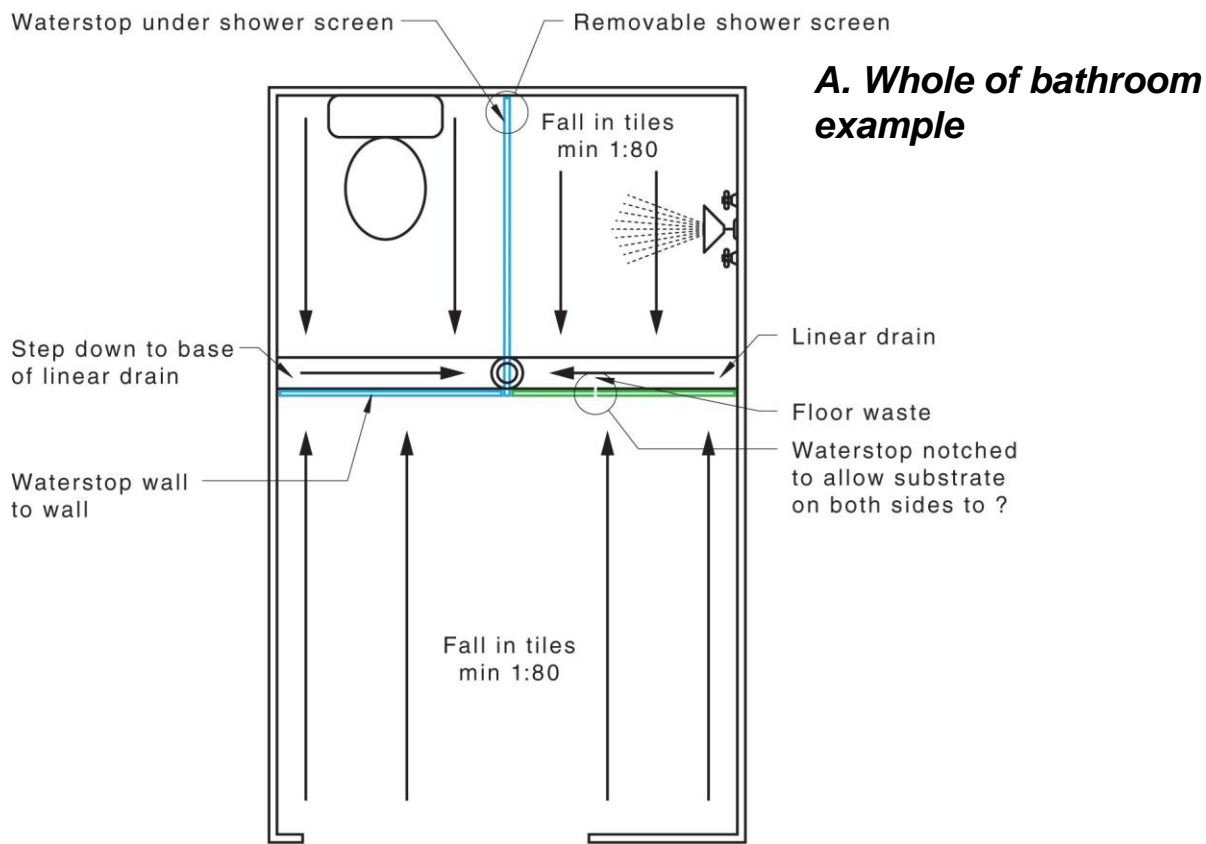


4.17 Polished Concrete

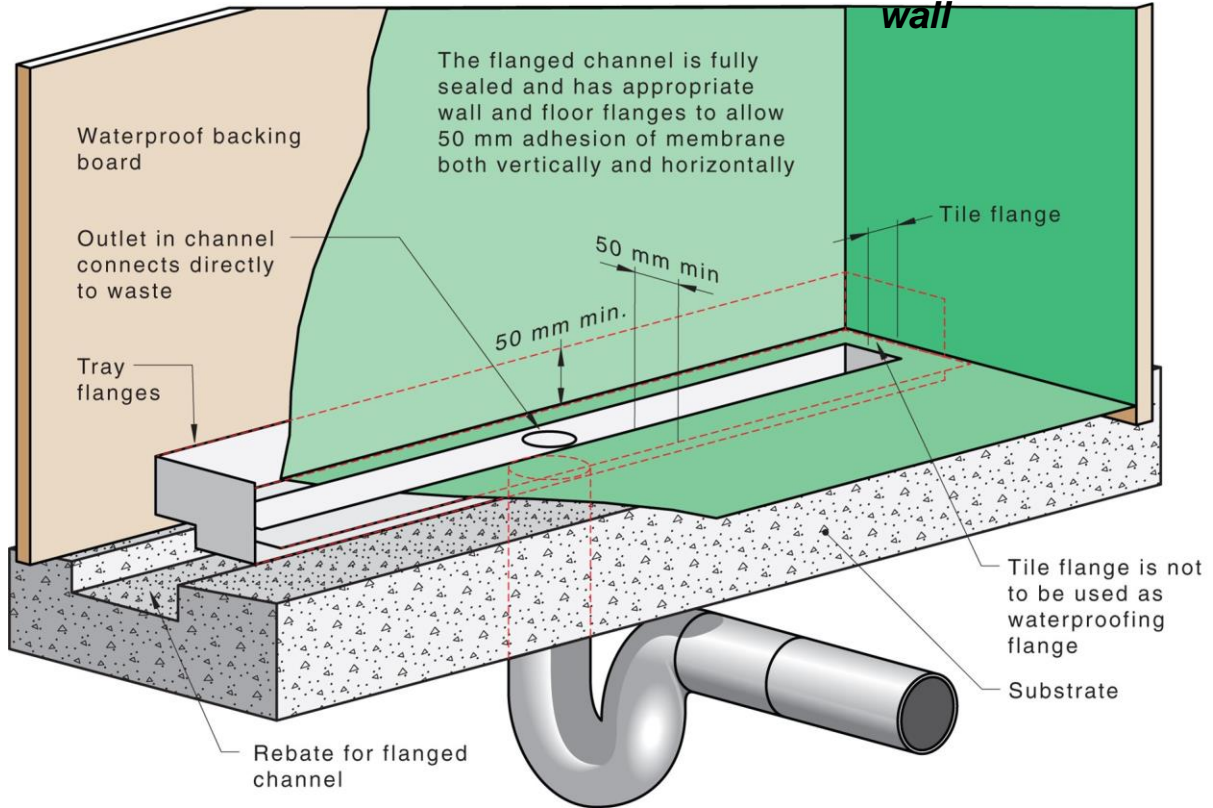
***Polished concrete floor
for unenclosed shower***



Appendix A.6 Design solutions for single floor waste wet areas with linear drains

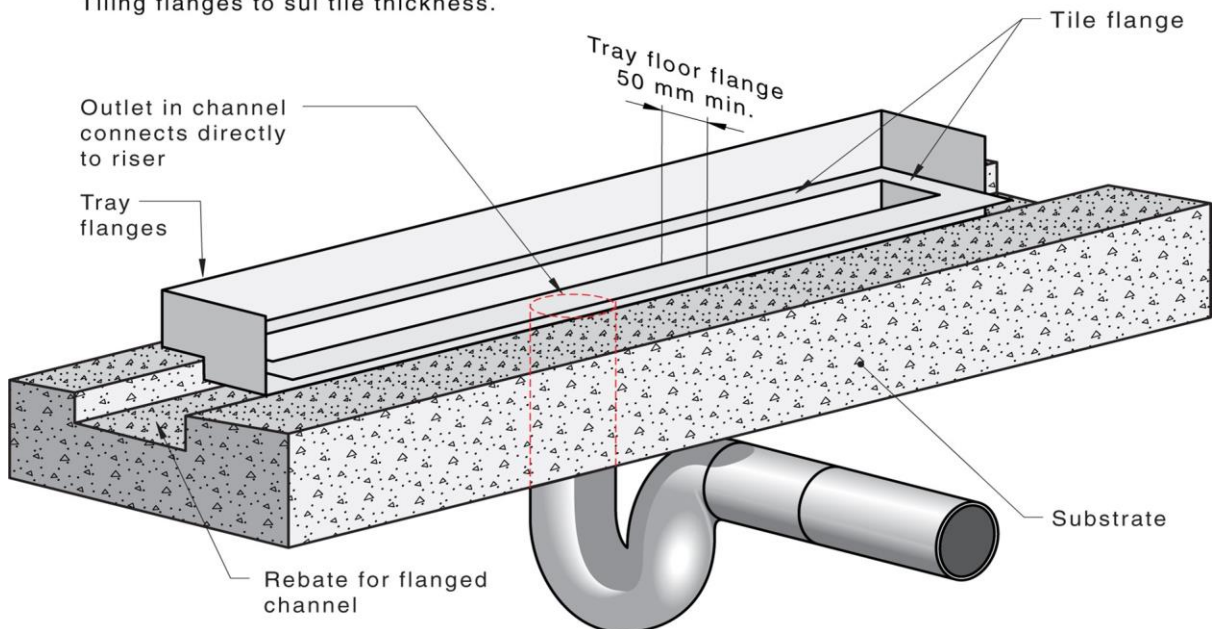


C. Custom fabricated flanged channel against a wall



Fabricated flanged channel for against wall installation. The fabricated channel becomes the floor/wall junction flashing as well as the drainage channel. Flanges for membrane adhesion 50 mm min. Tiling flanges not to be used for waterproofing. Tiling flanges to suit tile thickness.

D. Fabricated flange components explanatory diagram



Appendix E.1 Compatibility Chain

