



ROOFING

SikaRoof® MTC SYSTEM

ROOFING SOLUTIONS WITH SIKALASTIC® LIQUID MEMBRANES
DESIGNER SELECTION GUIDE

BUILDING TRUST



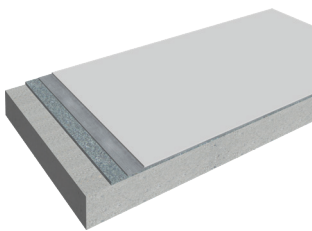
SikaRoof® MTC SYSTEM

Architectural freedom and durable solutions



SikaRoof® MTC 8

SikaRoof® MTC 8 is a UV stable or reflective roof coating system for enhanced energy efficiency. Using this system, the entire roof area is treated with Sikalastic®-621 TC. Once dry, another coat of Sikalastic®-621 TC is then applied and again allowed to cure



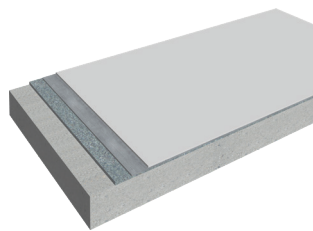
Build-up: Sika Concrete Primer applied to substrate following by 2x coats of Sikalastic® 621TC @ $\geq 0.75\text{kg/m}^2$

Layer thickness:
0.8 mm



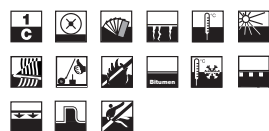
SikaRoof® MTC 12

SikaRoof® MTC 12 is a polyurethane based, roofing system which provides effective long term weatherproof protection. This system is based on an initial coat of Sikalastic®-601 BC, into which Sika Reemat Premium is embedded. Once cured, Sikalastic®-621 TC is applied.



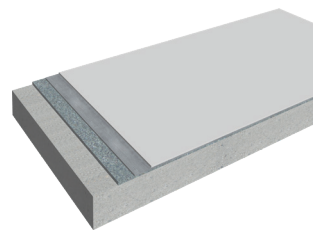
Build-up: Sika Concrete Primer applied to substrate followed by Sikalastic® 601BC@ $\geq 1.1\text{kg/m}^2$, Sikalastic® Reemat Premium and Sikalastic® 621TC@ $\geq 1.1\text{kg/m}^2$

Layer thickness:
1.2 mm



SikaRoof® MTC 18

SikaRoof® MTC 18 is a high performance, polyurethane based roofing system which provides effective long term weatherproof protection. This system is based on an initial coat of Sikalastic®-601 BC, into which Sika Reemat Premium is embedded. Once cured, Sikalastic®-621 TC is applied.



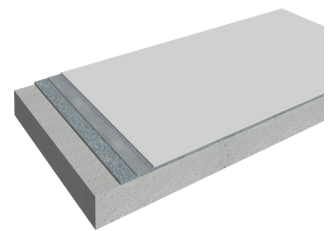
Build-up: Sika Concrete Primer applied to substrate followed by Sikalastic® 601BC@ $\geq 1.5\text{kg/m}^2$, Sikalastic® Reemat Premium and Sikalastic® 621TC@ $\geq 1.5\text{kg/m}^2$

Layer thickness:
1.8 mm



SikaRoof® MTC 22

SikaRoof® MTC 22 is a superior performance, polyurethane based roofing system which provides effective long term weatherproof protection. This system requires an initial coat of Sikalastic®-601 BC, into which Sika Reemat Premium is embedded. Two layers of Sikalastic®-621 TC are then applied to finish the system.



Build-up: Sika Concrete Primer applied to substrate followed by Sikalastic® 601BC@ $\geq 1.4\text{kg/m}^2$, Sikalastic® Reemat Premium and two subsequent coats of Sikalastic® 621TC@ $\geq 1.2\text{kg/m}^2$ each

Layer thickness:
2.2 mm



SikaRoof® MTC SYSTEM comprise of Sikalastic® liquid-applied membranes that cure to provide completely seamless waterproof protection. Their liquid application means that they can be easily applied to all complex detail areas.

KEY BENEFITS

- Can be used to overcoat failed Bitumen Roofs
- Freedom of design for complex roof shapes
- Completely seamless fully-bonded waterproofing system reducing the risk of leaks due to failure of laps
- Cold applied - cold fusion bonded, zero heat, zero flame application
- No fire watch required during application - installed system achieves highest fire ratings
- Sikalastic® MTC has been independently appraised by BRANZ (BRANZ Appraisal No. 670 [2010])
- Sikalastic® MTC has been independently approved by BBA
- High tensile strength - resists tear from building movement
- High elasticity - allows for greater thermal movement
- Compatible with bitumen

MOISTURE TRIGGERED CHEMISTRY

SikaRoof® MTC (Moisture Triggered Chemistry) System incorporate a unique technology that allows the material to use atmospheric moisture to trigger the curing process. This means the waterproof membranes are capable of curing in a wide range of conditions including extreme temperature ranges and humidity variations. Unlike traditional polyurethane systems they do not release CO₂, which often causes gassing, and application is not delayed by adverse weather conditions. It is not recommended to install SikaRoof® MTC systems when rain is imminent, as rainfall could affect the appearance of the product. However, once applied the membranes are waterproof and will not show an adverse reaction to water.

ZERO FLAME - ZERO HEAT

Cold applied and with no need to use a torch, hot air guns, hot gas guns or heating equipment such as bitumen boilers. Sikalastic® presents no fire risk during application or once in place, and gives contractors an opportunity to lower insurance premiums. Once installed the system achieves fire ratings.

SUPPORT AND SERVICE IN EVERY PHASE

- Support in project specifications
- Complete systems from vapour control layer to liquid waterproofing membrane

COMPETENCE AND QUALITY

- Waterproofing professionals since 1910
- Global market and technology leader with international references
- Proven products and application techniques
- All relevant international and national approvals and certifications
- Environment friendly, no CO₂ release

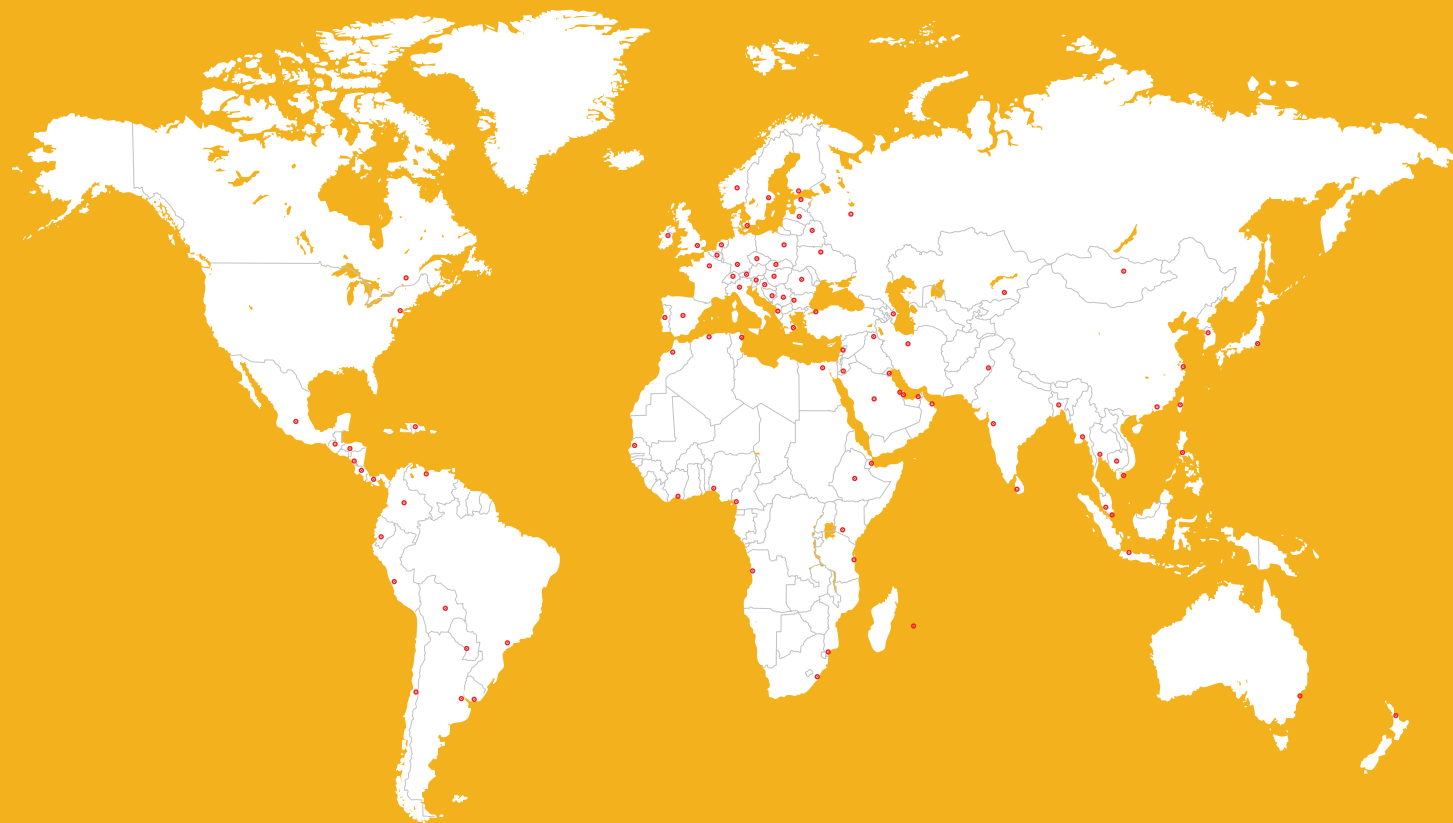
ADDED VALUE ON THE ROOF

- Extending the service life of existing roofing
- Reflective coating to enhance energy efficiency
- Easy and efficient execution of complex details

PROJECT RELATED REQUIREMENTS AND FUNCTIONS OF ROOFING SYSTEMS

	Single-component product		Withstands mechanical loads of pedestrian and light wheeled traffic
	Low-temperature stability.		Fire resistant
	Highly elastic and crack-bridging		Resistant to wind uplift
	Easy application by brush, roller or airless spray equipment even when accessibility is limited		UV resistant and resistant to yellowing
	Root resistant		Thermal-shock resistant, i.e. will not be damaged by extended or sudden thermal exposure to ice, hail, rain, direct sunlight or rapid thermal swings
	Bonds fully to most substrates, preventing the migration of water		Vapour permeable
	Seamless waterproofing membrane		Compatible with bituminous felts.
	Slip resistant (with quartz sand topping)		

GLOBAL BUT LOCAL PARTNERSHIPS



WE ARE SIKA

Sika is a specialty chemicals company with a leading position in the development and production of systems and products for bonding, sealing, damping, reinforcing and protecting in the building sector and the motor vehicle industry. Sika's product lines feature concrete admixtures, mortars, sealants and adhesives, structural strengthening systems, flooring as well as roofing and waterproofing systems.

HEAD OFFICE

55 Elizabeth Street
Wetherill Park, NSW 2164
P: (02) 9725 1145
F: (02) 9725 2605

NEW SOUTH WALES

122 Newton Road
Wetherill Park, NSW 2164
P: (02) 9725 1700
F: (02) 9756 5001

QUEENSLAND

30 Parker Court
Pinkenba, QLD 4008
P: (07) 3633 9222
F: (07) 3633 9200

QUEENSLAND

70 Platinum Street
Crestmead, QLD 4132
P: (07) 3489 3000
F: (07) 3489 3099

VICTORIA

33 Fiveways Boulevard
Keysborough, VIC 3173
P: (03) 9797 0600
F: (03) 9797 0666

SOUTH AUSTRALIA

28 Kenworth Road
Gepps Cross, SA 5094
P: (08) 8162 9055
F: (08) 8162 9009

SOUTH AUSTRALIA

1-2/28 Maxwell Road
Para Hills West, SA 5096
P: (08) 8349 4955
F: (08) 8349 7061

WESTERN AUSTRALIA

61 Bushland Ridge
Bibra Lake, WA 6163
P: (08) 9395 5300
F: (08) 9395 5399